

**ANNEX I**  
**SUMMARY OF PRODUCT CHARACTERISTICS**

▼ This medicinal product is subject to additional monitoring. This will allow quick identification of new safety information. Healthcare professionals are asked to report any suspected adverse reactions. See section 4.8 for how to report adverse reactions.

## 1. NAME OF THE MEDICINAL PRODUCT

Xofigo 1100 kBq/mL solution for injection

## 2. QUALITATIVE AND QUANTITATIVE COMPOSITION

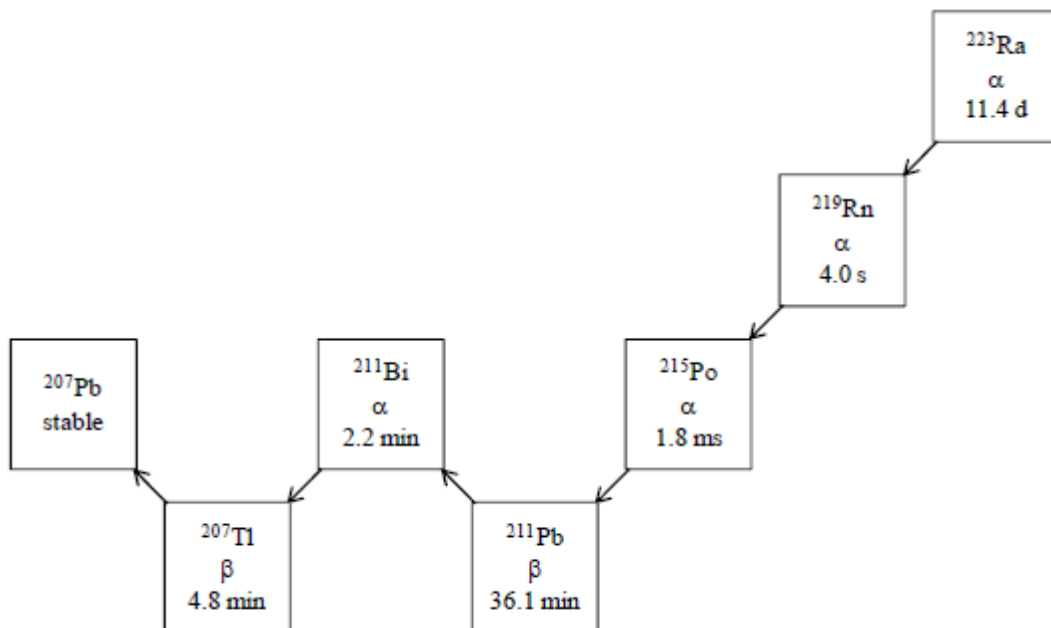
Each mL of solution contains 1100 kBq radium Ra 223 dichloride (radium-223 dichloride), corresponding to 0.58 ng radium-223 at the reference date. Radium is present in the solution as a free ion.

Each vial contains 6 mL of solution (6.6 MBq radium-223 dichloride at the reference date).

Radium-223 is an alpha particle-emitter with a half-life of 11.4 days. The specific activity of radium-223 is 1.9 MBq/ng.

The six-stage-decay of radium-223 to lead-207 occurs via short-lived daughters, and is accompanied by a number of alpha, beta and gamma emissions with different energies and emission probabilities. The fraction of energy emitted from radium-223 and its daughters as alpha-particles is 95.3% (energy range of 5.0 - 7.5 MeV). The fraction emitted as beta-particles is 3.6% (average energies are 0.445 MeV and 0.492 MeV), and the fraction emitted as gamma-radiation is 1.1% (energy range of 0.01 - 1.27 MeV).

**Figure 1: Radium-223 decay chain with physical half-lives and mode of decay:**



### Excipients with known effect

Each mL of solution contains 0.194 mmol (equivalent to 4.5 mg) of sodium.

For the full list of excipients, see section 6.1.

### 3. PHARMACEUTICAL FORM

Solution for injection.

Clear, colourless isotonic solution with pH between 6.0 and 8.0.

### 4. CLINICAL PARTICULARS

#### 4.1 Therapeutic indications

Xofigo monotherapy or in combination with luteinising hormone releasing hormone (LHRH) analogue is indicated for the treatment of adult patients with metastatic castration-resistant prostate cancer (mCRPC), symptomatic bone metastases and no known visceral metastases, in progression after at least two prior lines of systemic therapy for mCRPC (other than LHRH analogues), or ineligible for any available systemic mCRPC treatment (see section 4.4).

#### 4.2 Posology and method of administration

Xofigo should be administered only by persons authorised to handle radiopharmaceuticals in designated clinical settings (see section 6.6) and after evaluation of the patient by a qualified physician.

##### Posology

The dose regimen of Xofigo is an activity of 55 kBq per kg body weight, given at 4 week intervals for 6 injections.

Safety and efficacy beyond 6 injections with Xofigo have not been studied.

For details on the calculation of the volume to be administered see section 12.

##### Special populations

###### *Elderly*

No overall differences in safety or efficacy were observed between elderly (aged  $\geq 65$  years) and younger patients (aged  $< 65$  years) in the phase III study.

No dose adjustment is considered necessary in elderly patients.

###### *Hepatic impairment*

Safety and efficacy of Xofigo have not been studied in patients with hepatic impairment.

Since radium-223 is neither metabolised by the liver nor eliminated via the bile, hepatic impairment is not expected to affect the pharmacokinetics of radium-223 dichloride.

No dose adjustment is considered necessary in patients with hepatic impairment.

###### *Renal impairment*

In the phase III clinical study, no relevant differences in safety or efficacy were observed between patients with mild renal impairment (creatinine clearance [CLCR]: 50 to 80 mL/min) and normal renal function.

Limited data are available for patients with moderate (CLCR: 30 to 50 mL/min) renal impairment. No data are available for patients with severe (CLCR  $< 30$  mL/min) renal impairment or end-stage renal disease.

However, since excretion in urine is minimal and the major route of elimination is via the faeces, renal impairment is not expected to affect the pharmacokinetics of radium-223 dichloride.

No dose adjustment is considered necessary in patients with renal impairment.

###### *Paediatric population*

There is no relevant use of Xofigo in the paediatric population in the indication of prostate cancer.

## Method of administration

Xofigo is for intravenous use. It must be administered by slow injection (generally up to 1 minute).

The intravenous access line or cannula must be flushed with isotonic sodium chloride 9 mg/mL (0.9%) solution for injection before and after injection of Xofigo.

For additional instructions on the use of the medicinal product, see sections 6.6 and 12.

## **4.3 Contraindications**

Xofigo is contraindicated in combination with abiraterone acetate and prednisone/prednisolone (see section 4.4).

## **4.4 Special warnings and precautions for use**

### Combination with abiraterone and prednisone/prednisolone or with systemic cancer therapies other than LHRH analogues

An interim analysis from a clinical study in chemotherapy-naïve patients with asymptomatic or mildly symptomatic castration resistant prostate cancer and progressive disease with bone metastases showed an increased risk of fractures and a trend for increased mortality among patients receiving Xofigo in combination with abiraterone acetate and prednisone/prednisolone compared to patients receiving placebo in combination with abiraterone acetate and prednisone/prednisolone (see section 5.1).

Therefore, Xofigo is contraindicated in combination with abiraterone acetate and prednisone/prednisolone (see section 4.3).

Safety and efficacy of Xofigo in combination with cancer therapies other than LHRH analogues have not been established; an increased risk of mortality and fractures is possible. The combination of radium-223 with other systemic cancer therapies other than LHRH analogues is therefore not recommended.

Data on a safe period after which Xofigo can be administered following treatment with abiraterone acetate in combination with prednisone/prednisolone and vice versa is limited. Based on the elimination half-life of Xofigo and abiraterone, it is recommended that subsequent treatment with Xofigo is not initiated for at least 5 days after the last administration of abiraterone acetate in combination with prednisone/prednisolone. Subsequent systemic cancer treatment should not be initiated for at least 30 days after the last administration of Xofigo.

### Treatment of patients with asymptomatic or mildly symptomatic bone metastases

An increased risk of death and fractures was observed in a clinical study, where Xofigo was added to abiraterone acetate and prednisone/prednisolone in patients with asymptomatic or mildly symptomatic castration resistant prostate cancer.

Treatment benefit of Xofigo in adults with castration-resistant prostate cancer and only asymptomatic bone metastases is not established. The use of Xofigo is therefore not recommended for treatment of adults with castration-resistant prostate cancer and only asymptomatic bone metastases. In adults with castration-resistant prostate cancer and mildly symptomatic bone metastases the benefit of treatment should be carefully assessed to outweigh the risks considering that high osteoblastic activity is likely to be required for treatment benefit (see section 5.1).

### Patients with a low level of osteoblastic bone metastases

In clinical studies, patients with fewer than 6 bone metastases had an increased risk of fractures and did not have a statistically significant survival benefit. A pre-specified subgroup analysis also showed that overall survival was not significantly improved in patients with a total ALP < 220 U/L. Therefore, in patients with a low level of osteoblastic bone metastases radium-223 is not recommended (see section 5.1).

### Bone marrow suppression

Bone marrow suppression, notably thrombocytopenia, neutropenia, leukopenia and pancytopenia, has been reported in patients treated with Xofigo (see section 4.8).

Therefore, haematological evaluation of patients must be performed at baseline and prior to every dose of Xofigo. Before the first administration, the absolute neutrophil count (ANC) should be  $\geq 1.5 \times 10^9/l$ , the platelet count  $\geq 100 \times 10^9/l$  and haemoglobin  $\geq 10.0$  g/dl. Before subsequent administrations, the ANC should be  $\geq 1.0 \times 10^9/l$  and the platelet count  $\geq 50 \times 10^9/l$ . In case there is no recovery in these values within 6 weeks after the last administration of Xofigo despite receiving standard of care, further treatment with Xofigo should only be continued after a careful benefit/risk evaluation.

Patients with evidence of compromised bone marrow reserve e.g., following prior cytotoxic chemotherapy and/or radiation treatment (EBRT) or prostate cancer patients with advanced diffuse infiltration of the bone (EOD4; “superscan”) should be treated with caution. An increased incidence of haematological adverse reactions such as neutropenia and thrombocytopenia were observed in these patients during the phase III study (see section 4.8).

The efficacy and safety of cytotoxic chemotherapy performed after treatment with Xofigo has not been established. The limited available data indicates that patients receiving chemotherapy after Xofigo had a similar haematological profile compared to patients receiving chemotherapy after placebo (see also section 5.1).

### Crohn’s disease and ulcerative colitis

Safety and efficacy of Xofigo in patients with Crohn’s disease and with ulcerative colitis have not been studied. Due to the faecal excretion of Xofigo, radiation may lead to aggravation of acute inflammatory bowel disease. Xofigo should only be administered after a careful benefit-risk assessment in patients with acute inflammatory bowel disease.

### Spinal cord compression

In patients with untreated imminent or established spinal cord compression, treatment with standard of care, as clinically indicated, should be completed before starting or resuming treatment with Xofigo.

### Bone fractures

Xofigo increases the risk of bone fractures. In a clinical study, the addition of Xofigo to abiraterone acetate and prednisone/prednisolone, increased the incidence of fractures approximately three-fold in the Xofigo arm (see sections 4.8 and 5.1). Increased fracture risk has been found especially in patients with medical history of osteoporosis and in patients with less than 6 bone metastases. Xofigo is believed to accumulate at sites of high bone turnover such as sites of degenerative bone disease (osteoporosis) or recent (micro-)fracture increasing the risk of fractures. Other factors such as concomitant use of steroids may further increase the risk of fracture.

Prior to starting radium-223 bone status (e.g., by scintigraphy, bone mineral density measurement) and baseline risk of fractures of patients (e.g., osteoporosis, less than 6 bone metastases, treatment increasing fracture risk, low body mass index) should be carefully assessed, and closely monitored for at least 24 months. Preventive measures such as the use of bisphosphonates or denosumab should be considered before starting or resuming treatment with Xofigo (see section 4.8). In patients with a high baseline risk of

fracture, the benefit of treatment should be carefully assessed to outweigh the risk. In patients with bone fractures, orthopaedic stabilisation of fractures should be performed before starting or resuming treatment with Xofigo.

#### Osteonecrosis of the jaw

In patients treated with bisphosphonates and Xofigo, an increased risk of development of osteonecrosis of the jaw (ONJ) cannot be excluded. In the phase III study, cases of ONJ have been reported in 0.67% patients (4/600) in the Xofigo arm compared to 0.33% patients (1/301) in the placebo arm. However, all patients with ONJ were also exposed to prior or concomitant bisphosphonates (e.g., zoledronic acid) and prior chemotherapy (e.g., docetaxel).

#### Secondary malignant neoplasms

Xofigo contributes to a patient's overall long-term cumulative radiation exposure. Therefore, long-term cumulative radiation exposure may be associated with an increased risk of cancer and hereditary defects. In particular, the risk for osteosarcoma, myelodysplastic syndrome and leukaemias may be increased. No cases of Xofigo-induced cancer have been reported in clinical studies in follow-up of up to three years.

#### Gastrointestinal toxicity

Xofigo increases the incidence of diarrhoea, nausea, and vomiting (see section 4.8) which may result in dehydration. Oral intake and fluid status of patients should be carefully monitored. Patients should be advised to seek medical advice if they experience severe or persistent diarrhoea, nausea, vomiting. Patients who display signs or symptoms of dehydration or hypovolemia should be promptly treated.

#### Contraception in males

Because of potential effects on spermatogenesis associated with radiation, men should be advised to use effective contraceptive methods during and up to 6 months after treatment with Xofigo (see section 4.6).

#### Excipients

Depending on the volume administered, this medicinal product contains up to 54 mg (2.35 mmol) sodium per dose, equivalent to 2.7% of the WHO recommended maximum daily intake of 2 g sodium for an adult.

### **4.5 Interaction with other medicinal products and other forms of interaction**

No clinical interaction studies have been performed.

As interactions with calcium and phosphate cannot be excluded, pausing supplementation with these substances and/or Vitamin D should be considered some days before starting with Xofigo treatment.

Concomitant chemotherapy with Xofigo may have additive effects on bone marrow suppression (see section 4.4). Safety and efficacy of concomitant chemotherapy with Xofigo have not been established.

### **4.6 Fertility, pregnancy and lactation**

#### Contraception in males

Animal reproduction studies have not been conducted with Xofigo.

Because of potential effects on spermatogenesis associated with radiation, men should be advised to use effective contraceptive methods during and up to 6 months after treatment with Xofigo.

## Pregnancy and breast-feeding

Xofigo is not indicated in women. Xofigo is not to be used in women who are, or may be, pregnant or breast-feeding.

## Fertility

There are no human data on the effect of Xofigo on fertility.

Based on studies in animals, there is a potential risk that radiation from Xofigo may potentially have toxic effects on male gonads and spermatogenesis (see section 5.3). Male patients should seek advice on conservation of sperm prior to treatment.

### **4.7 Effects on ability to drive and use machines**

Xofigo has no or negligible influence on the ability to drive and use machines.

### **4.8 Undesirable effects**

#### Summary of the safety profile

The overall safety profile of Xofigo is based on data from 600 patients treated with Xofigo in the phase III study.

The **most frequently** observed adverse reactions ( $\geq 10\%$ ) in patients receiving Xofigo were diarrhoea, nausea, vomiting, thrombocytopenia and bone fracture.

The **most serious** adverse reactions were thrombocytopenia and neutropenia (see section 4.4 and ‘Description of selected adverse reactions’ below).

#### Tabulated list of adverse reactions

The adverse reactions observed with Xofigo are represented in the table below (see Table 1). They are classified according to System Organ Class. The most appropriate MedDRA term is used to describe a certain reaction and its synonyms and related conditions.

Adverse reactions from clinical studies are classified according to their frequencies. Frequencies are defined as very common ( $\geq 1/10$ ), common ( $\geq 1/100$  to  $< 1/10$ ), uncommon ( $\geq 1/1\ 000$  to  $< 1/100$ ), rare ( $\geq 1/10\ 000$  to  $< 1/1\ 000$ ); very rare ( $< 1/10\ 000$ ).

Within each frequency grouping, adverse reactions are presented in order of decreasing seriousness.

**Table 1: Adverse reactions reported in clinical studies in patients treated with Xofigo**

<b>System organ class (MedDRA)</b>	<b>Very common</b>	<b>Common</b>	<b>Uncommon</b>
<b>Blood and lymphatic system disorders</b>	Thrombocytopenia	Neutropenia Pancytopenia Leukopenia	Lymphopenia
<b>Gastrointestinal disorders</b>	Diarrhoea Vomiting Nausea		
<b>Musculoskeletal and connective tissue disorders</b>	Bone fracture		Osteoporosis
<b>General disorders and administration site conditions</b>		Injection site reactions	

## Description of selected adverse reactions

### *Bone fractures*

Xofigo increases the risk of bone fractures (see section 5.1). In clinical studies, concurrent use of bisphosphonates or denosumab reduced the incidence of fractures in patients treated with radium-223 monotherapy. Fractures have occurred for up to 24 months after the first dose of radium-223.

### *Thrombocytopenia and neutropenia*

Thrombocytopenia (all grades) occurred in 11.5% of patients treated with Xofigo and 5.6% of patients receiving placebo. Grade 3 and 4 thrombocytopenia was observed in 6.3% of patients treated with Xofigo and in 2% of patients receiving placebo (see section 4.4). Overall, the frequency of grade 3 and 4 thrombocytopenia was lower in patients that did not previously receive docetaxel (2.8% in patients treated with Xofigo versus 0.8% in patients receiving placebo) compared to patients that previously received docetaxel (8.9% in patients treated with Xofigo versus 2.9% in patients receiving placebo). In EOD4 (“superscan”) patients, thrombocytopenia (all grades) was reported in 19.6% of patients treated with Xofigo and in 6.7% of patients receiving placebo. Grade 3 and 4 thrombocytopenia was observed in 5.9% of patients treated with Xofigo and in 6.7% of patients receiving placebo (see section 4.4).

Neutropenia (all grades) was reported in 5% of patients treated with Xofigo and in 1% of patients receiving placebo. Grade 3 and 4 neutropenia was observed in 2.2% of patients treated with Xofigo and in 0.7% of patients receiving placebo. Overall, the frequency of grade 3 and 4 neutropenia was lower in patients that did not previously receive docetaxel (0.8% in patients treated with Xofigo versus 0.8% in patients receiving placebo) compared to patients that previously received docetaxel (3.2% in patients treated with Xofigo versus 0.6% in patients receiving placebo).

In a phase I study, neutrophil and platelet count nadirs occurred at 2 to 3 weeks after intravenous administration of a single dose of Xofigo.

### *Injection site reactions*

Grade 1 and 2 injection site reactions, such as erythema, pain and swelling, were reported in 1.2% of patients treated with Xofigo and in 0% of patients receiving placebo.

### *Secondary malignant neoplasms*

Xofigo contributes to a patient’s overall long-term cumulative radiation exposure. Long-term cumulative radiation exposure may be associated with an increased risk of cancer and hereditary defects. In particular, the risk for osteosarcoma, myelodysplastic syndrome and leukaemias may be increased.

No cases of Xofigo-induced cancer have been reported in clinical studies in follow-up of up to three years.

## Reporting of suspected adverse reactions

Reporting suspected adverse reactions after authorisation of the medicinal product is important. It allows continued monitoring of the benefit/risk balance of the medicinal product. Healthcare professionals are asked to report any suspected adverse reactions via **the national reporting system listed in [Appendix V](#)**.

## **4.9 Overdose**

There have been no reports of inadvertent overdosing of Xofigo during clinical studies.

There is no specific antidote. In the event of an inadvertent overdose, general supportive measures, including monitoring for potential haematological and gastrointestinal toxicity should be undertaken.

Single Xofigo doses containing an activity of up to 276 kBq per kg body weight were evaluated in a phase I clinical study and no dose-limiting toxicities were observed.



## 5. PHARMACOLOGICAL PROPERTIES

### 5.1 Pharmacodynamic properties

Pharmaco-therapeutic group: Therapeutic radiopharmaceuticals, other therapeutic radiopharmaceuticals, various therapeutic radiopharmaceuticals, ATC code: V10XX03

#### Mechanism of action

Xofigo is a therapeutic alpha particle-emitting pharmaceutical.

Its active moiety radium-223 (as radium-223 dichloride) mimics calcium and selectively targets bone, specifically areas of bone metastases, by forming complexes with the bone mineral hydroxyapatite. The high linear energy transfer of alpha emitters (80 keV/ $\mu\text{m}$ ) leads to a high frequency of double-strand DNA breaks in adjacent tumour cells, resulting in a potent cytotoxic effect. Additional effects on the tumour microenvironment including osteoblasts and osteoclasts also contribute to the *in vivo* efficacy. The alpha particle range from radium-223 is less than 100  $\mu\text{m}$  (less than 10 cell diameters) which minimises damage to the surrounding normal tissue.

#### Pharmacodynamic effects

Compared with placebo, there was a significant difference in favour of Xofigo for all five serum biomarkers for bone turnover studied in a phase II randomised study (bone formation markers: bone alkaline phosphatase [ALP], total ALP and procollagen I N propeptide [PINP], bone resorption markers: C-terminal crosslinking telopeptide of type I collagen / serum C-terminal crosslinked telopeptide of type I collagen [S-CTX-I] and type I collagen crosslinked C-telopeptide [ICTP]).

#### *Cardiac electrophysiology / QT prolongation*

No significant QTc prolonging effects were observed after intravenous injection of Xofigo in comparison with placebo in a subgroup of 29 patients in the phase III study (ALSYMPCA).

#### Clinical efficacy and safety

The clinical safety and efficacy of Xofigo have been evaluated in a double-blind, randomised, multiple doses, phase III, multicentre study (ALSYMPCA; EudraCT 2007-006195-1) in castration-resistant prostate cancer patients with symptomatic bone metastases. Patients with visceral metastases and malignant lymphadenopathy exceeding 3 cm were excluded.

The primary efficacy endpoint was overall survival. Main secondary endpoints included time to symptomatic skeletal events (SSE), time to progression of total alkaline phosphatase (ALP), time to progression of prostate specific antigen (PSA), response of total ALP and normalisation of total ALP.

At the cut-off date of the pre-planned interim analysis (confirmatory analysis), a total of 809 patients were randomised 2:1 to receive Xofigo 55 kBq/kg intravenously every 4 weeks for 6 cycles (N=541) plus best standard of care, or matching placebo plus best standard of care (N=268). Best standard of care included e.g. local external beam radiotherapy, bisphosphonates, corticosteroids, antiandrogens, oestrogens, estramustine or ketoconazole.

An updated descriptive analysis of safety and of overall survival was performed in 921 randomised patients prior to implementing crossover (i.e., offering patients in the placebo group to receive Xofigo treatment).

Demographic and baseline disease characteristics (interim analysis population) were similar between the Xofigo and placebo groups and are shown below for Xofigo:

- the mean age of patients was 70 years (range 49 to 90 years).
- 87% of patients enrolled had an ECOG performance status score of 0-1.
- 41% received bisphosphonates.
- 42% of patients did not receive prior docetaxel because they were deemed ineligible or refused to receive docetaxel.
- 46% of patients had no pain or WHO scale 1 (asymptomatic or mildly symptomatic) and 54% had pain WHO scale 2-3.
- 16% of patients had <6 bone metastases, 44% of patients had between 6 and 20 bone metastases, 40% of patients had more than 20 bone metastases or superscan.

During the treatment period, 83% of patients received luteinising hormone-releasing hormone (LHRH) agonists and 21% of patients received anti-androgens concomitantly.

The results of both the interim and updated analysis revealed that overall survival was significantly longer in patients treated with Xofigo plus best standard of care compared to patients treated with placebo plus best standard of care (see Table 2 and Figure 2). A higher rate of non-prostate cancer related deaths was observed in the placebo group (26/541, 4.8% in the Xofigo arm compared to 23/268, 8.6% in the placebo arm).

**Table 2: Survival results from the phase III ALSYMPCA study**

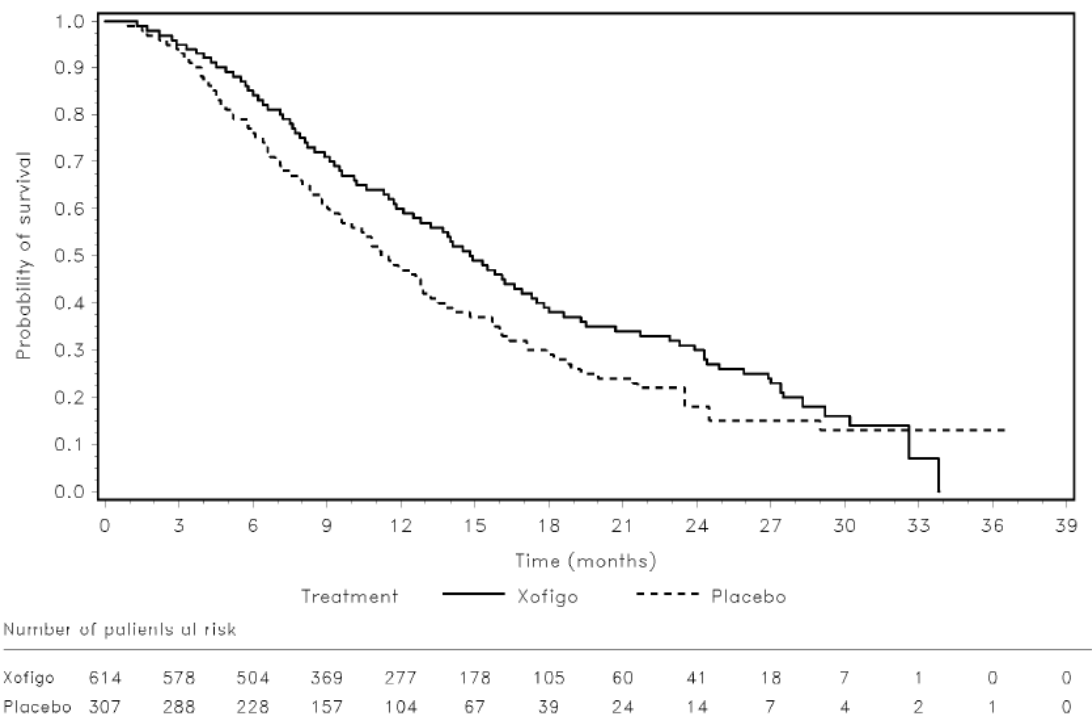
	<b>Xofigo</b>	<b>Placebo</b>
<b>Interim analysis</b>	N = 541	N = 268
Number (%) of deaths	191 (35.3%)	123 (45.9%)
Median overall survival (months) (95% CI)	14.0 (12.1 – 15.8)	11.2 (9.0 – 13.2)
Hazard ratio <sup>b</sup> (95% CI)	0.695 (0.552 – 0.875)	
p-value <sup>a</sup> (2-sided)	0.00185	
<b>Updated analysis</b>	N = 614	N = 307
Number (%) of deaths	333 (54.2%)	195 (63.5%)
Median overall survival (months) (95% CI)	14.9 (13.9 – 16.1)	11.3 (10.4 – 12.8)
Hazard ratio <sup>b</sup> (95% CI)	0.695 (0.581 – 0.832)	

CI = confidence interval

<sup>a</sup> The Phase 3 study ALSYMPCA was stopped for efficacy after the interim analysis. As the updated analysis is provided for descriptive purposes only, a p-value is not provided.

<sup>b</sup> Hazard ratio (Xofigo over placebo) < 1 favours Xofigo.

**Figure 2: Kaplan-Meier overall survival curves (updated analysis)**



The results of the interim analysis and the updated analysis also showed a significant improvement in all main secondary endpoints in the Xofigo arm compared to the placebo arm (see Table 3). Time to event data on ALP progression were supported by statistically significant advantage with respect to ALP normalisation and ALP responses at week 12.

**Table 3: Secondary efficacy endpoints from the phase III ALSYMPCA study (interim analysis)**

		Incidence		Time-to-event analysis (95% CI)			p-value	
		[no. (%) of patients]		[median no. of months]		Hazard ratio		
		Xofigo N = 541	Placebo N = 268	Xofigo N = 541	Placebo N = 268	< 1 favours Xofigo		
Symptomatic skeletal event (SSE)	<b>SSE composite endpoint<sup>a</sup></b>		132 (24.4%)	82 (30.6%)	13.5 (12.2–19.6)	8.4 (7.2–NE) <sup>b</sup>	0.610 (0.461 – 0.807)	0.00046
	SSE components	<b>External beam radiation for pain relief</b>	122 (22.6%)	72 (26.9%)	17.0 (12.9–NE)	10.8 (7.9–NE)	0.649 (0.483 – 0.871)	0.00375
		<b>Spinal cord compression</b>	17 (3.1%)	16 (6.0%)	NE	NE	0.443 (0.223 – 0.877)	0.01647
		<b>Surgical intervention</b>	9 (1.7%)	5 (1.9%)	NE	NE	0.801 (0.267 – 2.398)	0.69041
		<b>Bone fractures</b>	20 (3.7%)	18 (6.7%)	NE	NE	0.450 (0.236 – 0.856)	0.01255
<b>Total ALP progression<sup>c</sup></b>		79 (14.6%)	116 (43.3%)	NE	3.7 (3.5 – 4.1)	0.162 (0.120 – 0.220)	< 0.00001	
<b>PSA progression<sup>d</sup></b>		288 (53.2%)	141 (52.6%)	3.6 (3.5 – 3.7)	3.4 (3.3 – 3.5)	0.671 (0.546 – 0.826)	0.00015	

ALP = alkaline phosphatase; CI = confidence interval; NE = not estimable; PSA = prostate-specific antigen;

SSE = symptomatic skeletal event

a Defined as occurrence of any of the following: external beam radiotherapy to relieve pain, or pathologic fracture, or spinal cord compression, or tumour-related orthopedic surgical intervention.

b not estimable owing to insufficient events after the median

c Defined as  $\geq 25\%$  increase compared to baseline/nadir.

d Defined as a  $\geq 25\%$  increase and an increase in absolute value of  $\geq 2$  ng/mL compared to baseline/nadir.

#### Subgroup survival analysis

Subgroup survival analysis showed a consistent survival benefit for treatment with Xofigo, independent of use of bisphosphonates at baseline and prior use of docetaxel.

A statistically significant overall survival benefit of treatment could not be demonstrated in the subgroups of patients with fewer than 6 metastases (HR for radium-223 to placebo 0.901; 95% CI [0.553 -1.466],  $p=0.674$ ) or a baseline total alkaline phosphatase (ALP)  $< 220$  U/L (HR 0.823; 95% CI [0.633 -1.068],  $p=0.142$ ) in the phase III ALSYMPCA study. Therefore, efficacy may be diminished in patients with a low level of osteoblastic activity from their bone metastases.

#### Quality of life

Health Related Quality of Life (HRQOL) was assessed in the phase III ALSYMPCA study using specific questionnaires: the EQ-5D (generic instrument) and the FACT-P (prostate cancer specific instrument). Both groups experience a loss of quality of life. Relative to placebo, the decline in quality of life was slower for Xofigo during the on-treatment period as measured by EQ-5D utility index score (-0.040 versus -0.109;  $p=0.001$ ), EQ-5D self-reported Visual Analogue health status scores (VAS) (-2.661 versus -5.860;  $p=0.018$ ) and the FACT P total score (-3.880 versus -7.651,  $p=0.006$ ) but did not reach published minimally important differences. There is limited evidence that the delay in loss of HRQOL extends beyond the treatment period.

#### Pain relief

The results from the phase III ALSYMPCA study regarding time to external beam radiation therapy (EBRT) for pain relief and fewer patients reporting bone pain as an adverse event in the Xofigo group indicate a positive effect on bone pain.

### *Subsequent treatment with cytotoxic substances*

In the course of the 2:1 randomised ALSYMPCA study, 93 (15.5%) patients in the Xofigo group and 54 (17.9%) patients in the placebo group received cytotoxic chemotherapy at varying times after the last treatment. No differences in haematological laboratory values were apparent between the two groups.

### *Combination with abiraterone and prednisone/prednisolone*

The clinical efficacy and safety of concurrent initiation of Xofigo, abiraterone acetate and prednisone/prednisolone treatment was assessed in a randomised, placebo-controlled multicenter phase III study (ERA-223 study) in 806 chemotherapy-naïve patients with asymptomatic or mildly symptomatic castration resistant prostate cancer with bone metastases. The study was unblinded early based on an Independent Data Monitoring Committee Recommendation. At an interim analysis, an increased incidence of fractures (28.6% vs 11.4%) and reduced median overall survival (30.7 months versus 33.3 months, HR 1.195, 95% CI [0.950 - 1.505], p=0.13) was observed among patients receiving Xofigo in combination with abiraterone acetate and prednisone/prednisolone compared to patients receiving placebo in combination with abiraterone acetate and prednisone/prednisolone.

### Paediatric population

The European Medicines Agency has waived the obligation to submit the results of studies with Xofigo in all subsets of the paediatric population in the treatment of all conditions included in the category of malignant neoplasms (except central nervous system tumours, haematopoietic and lymphoid tissue neoplasms) and in the treatment of multiple myeloma (see section 4.2 for information on paediatric use).

## **5.2 Pharmacokinetic properties**

### General introduction

Pharmacokinetic, biodistribution and dosimetry data have been obtained from 3 phase I studies.

Pharmacokinetic data were obtained in 25 patients at activities ranging from 51 to 276 kBq/kg.

Pharmacokinetic, biodistribution and dosimetry data were obtained in 6 patients at an activity of 110 kBq/kg given twice, 6 weeks apart, and in 10 patients at an activity of 55, 110 or 221 kBq/kg.

### Absorption

Xofigo is administered as an intravenous injection and is thus 100% bioavailable.

### Distribution and organ uptake

After intravenous injection, radium-223 is rapidly cleared from the blood and is incorporated primarily into bone and bone metastases or is excreted into the intestine.

Fifteen minutes post injection, about 20% of the injected activity remained in the blood. At 4 hours, about 4% of the injected activity remained in the blood, decreasing to less than 1% at 24 hours after the injection. The volume of distribution was higher than the blood volume indicating distribution to peripheral compartments.

At 10 minutes post injection, activity was observed in the bone and in the intestine. At 4 hours post injection, the mean percentage of the radioactive dose present in bone and intestine was approximately 61% and 49%, respectively.

No significant uptake was seen in other organs such as heart, liver, kidneys, urinary bladder and spleen at 4 hours post injection.

### Biotransformation

Radium-223 is an isotope which decays and is not metabolised.

## Elimination

Faecal excretion is the major route of elimination from the body. About 5% is excreted in the urine and there is no evidence of hepatobiliary excretion.

The whole-body measurements at 7 days after injection (after correcting for decay) indicate that a median of 76% of administered activity was excreted from the body. The rate of elimination of radium-223 dichloride from the gastrointestinal tract is influenced by the high variability in intestinal transit rates across the population, with the normal range from once daily to once weekly bowel evacuation.

## Linearity/non-linearity

The pharmacokinetics of radium-223 dichloride were linear in the activity range investigated (51 to 276 kBq/kg).

## Paediatric population

Safety and effectiveness of Xofigo have not been studied in children and adolescents below 18 years of age.

## **5.3 Preclinical safety data**

### Systemic toxicity

In single and repeated dose toxicity studies in rats, the main findings were reduced body weight gain, haematological changes, reduced serum alkaline phosphatase and microscopic findings in the bone marrow (depletion of haematopoietic cells, fibrosis), spleen (secondary extra-medullary haematopoiesis) and bone (depletion of osteocytes, osteoblasts, osteoclasts, fibro-osseous lesions, disruption/disorganisation of the physis/growth line). These findings were related to radiation-induced impairment of haematopoiesis and a reduction of osteogenesis and started at the lowest activity of 22 kBq per kg body weight (0.4 times the clinically recommended dose).

In dogs, haematological changes were observed starting at the lowest activity of 55 kBq/kg, the clinically recommended dose. Dose-limiting myelotoxicity was seen in dogs after single administration of 497 kBq radium-223 dichloride per kg body weight (9 times the clinically recommended activity).

After repeated administration of the clinically recommended activity of 55 kBq per kg body weight once every 4 weeks for 6 months, two dogs developed non-displaced pelvic fractures. Due to the presence of osteolysis of trabecular bone in other bone locations of treated animals in varying degree, a spontaneous fracture in the context of osteolysis cannot be excluded. The clinical relevance of these findings is unknown.

Retinal detachment was seen in dogs after a single injection of activities of 166 and 497 kBq per kg body weight (3 and 9 times the clinically recommended dose), but not after repeated administration of the clinically recommended activity of 55 kBq per kg body weight once every 4 weeks for 6 months. The exact mechanism for induction of retinal detachment is unknown, but literature data suggests that radium is specifically taken up in the *tapetum lucidum* of the canine eye. Since humans do not have a *tapetum lucidum*, the clinical relevance of these findings for humans is uncertain. No case of retinal detachment has been reported in clinical studies.

No histological changes were observed in organs involved in the excretion of radium-223 dichloride.

Osteosarcomas, a known effect of bone-seeking radionuclides, were observed at clinically relevant doses in rats 7 – 12 months after start of treatment. Osteosarcomas were not observed in dog studies. No case of osteosarcoma has been reported in clinical studies with Xofigo. The risk for patients to develop osteosarcomas with exposure to radium-223 is unknown at present. The presence of neoplastic changes, other than osteosarcomas, was also reported in the longer term (12 to 15 months) rat toxicity studies (see section 4.8).

### Embryotoxicity / Reproduction toxicity

Studies on reproductive and developmental toxicity have not been performed. In general, radionuclides induce reproductive and developmental effects.

A minimal number of abnormal spermatocytes were seen in a few seminiferous tubules in the testes of male rats after a single administration of  $\geq 2270$  kBq/kg body weight radium-223 dichloride ( $\geq 41$  times the clinically recommended activity). The testes seemed to otherwise be functioning normally and the epididymides revealed a normal content of spermatocytes. Uterine polyps (endometrial stroma) were observed in female rats after single or repeated administration of  $\geq 359$  kBq/kg body weight radium-223 dichloride ( $\geq 6.5$  times the clinically recommended activity).

Since radium-223 distributes mainly to bone, the potential risk for toxic effects on male gonads in cancer patients with castration-resistant prostate cancer is very low but cannot be excluded (see section 4.6).

### Genotoxicity / Carcinogenicity

Studies on the mutagenic and carcinogenic potential of Xofigo have not been performed. In general, radionuclides are considered to be genotoxic and carcinogenic.

### Safety pharmacology

No significant effects were seen on vital organ systems, i.e., cardiovascular (dog), respiratory or central nervous systems (rat), after single dose administration of activities from 497 to 1100 kBq per kg body weight (9 [dog] to 20 [rat] times the clinically recommended activity).

## **6. PHARMACEUTICAL PARTICULARS**

### **6.1 List of excipients**

Water for injections  
Sodium citrate  
Sodium chloride  
Hydrochloric acid, dilute

### **6.2 Incompatibilities**

In the absence of compatibility studies, this medicinal product must not be mixed with other medicinal products.

### **6.3 Shelf life**

28 days.

### **6.4 Special precautions for storage**

This medicinal product does not require any special temperature storage conditions. Storage of radiopharmaceuticals should be in accordance with national regulation on radioactive materials.

### **6.5 Nature and contents of container**

Colourless Type I glass vial closed with a grey bromobutyl rubber stopper either with or without foil-clad made of Ethylene tetrafluoroethylene (ETFE), both capped with aluminium seal, containing 6 mL of solution for injection.

The vial is stored in a lead pot.

## **6.6 Special precautions for disposal and other handling**

### General warnings

Radiopharmaceuticals should be received, used and administered only by authorised persons in designated clinical settings. Their receipt, storage, use, transfer and disposal are subject to the regulations and/or appropriate licenses of the competent official organisation.

Radiopharmaceuticals should be handled in a manner which satisfies both radiation safety and pharmaceutical quality requirements. Appropriate aseptic precautions should be taken.

### Radiation protection

The gamma radiation associated with the decay of radium-223 and its daughters allows for the radioactivity measurement of Xofigo and the detection of contaminations with standard instruments.

The administration of radiopharmaceuticals creates risks for other persons from external radiation or contamination from spill of urine, faeces, vomiting etc. Radiation protection precautions in accordance with national regulations must therefore be taken. Care should be used when handling materials, such as bed linen, that come into contact with such body fluids. Although radium-223 is predominantly an alpha emitter, gamma and beta radiation is associated with the decay of radium-223 and its radioactive daughter isotopes. The external radiation exposure associated with handling of patient doses is considerably lower in comparison to other radiopharmaceuticals for therapeutic purposes as the administered radioactivity will usually be below 8 MBq. However, in keeping with the ALARA (“As Low As Reasonably Achievable”) principle, for minimisation of radiation exposure, it is recommended to minimise the time spent in radiation areas, to maximise the distance to radiation sources, and to use adequate shielding.

Any unused radiopharmaceutical or waste materials should be disposed of in accordance with local regulations.

Any materials used in connection with the preparation or administration of Xofigo are to be treated as radioactive waste.

## **7. MARKETING AUTHORISATION HOLDER**

Bayer AG  
51368 Leverkusen  
Germany

## **8. MARKETING AUTHORISATION NUMBER(S)**

EU/1/13/873/001

## **9. DATE OF FIRST AUTHORISATION/RENEWAL OF THE AUTHORISATION**

Date of first authorisation: 13 November 2013

Date of latest renewal: 21 June 2018

## **10. DATE OF REVISION OF THE TEXT**



## 11. DOSIMETRY

The absorbed radiation dose calculation was performed based on clinical biodistribution data. Calculations of absorbed doses were performed using OLINDA/EXM (**O**rgan **L**evel **I**Nternal **D**ose **A**ssessment/**E**Xponential **M**odeling), a software based on the Medical Internal Radiation Dose (MIRD) algorithm, which is widely used for established beta and gamma emitting radionuclides. For radium-223, as primarily an alpha emitter, additional assumptions were made for the intestine, red marrow and bone/osteogenic cells, to provide the best possible absorbed dose calculations for Xofigo, considering its observed biodistribution and specific characteristics (see Table 4).

**Table 4: Calculated absorbed radiation doses to organs**

Target Organ	Alpha <sup>1</sup> emission (Gy/MBq)	Beta emission (Gy/MBq)	Gamma emission (Gy/MBq)	Total dose (Gy/MBq)	Coefficient of variation (%)
Adrenals	0.00000	0.00002	0.00009	0.00012	56
Brain	0.00000	0.00002	0.00008	0.00010	80
Breasts	0.00000	0.00002	0.00003	0.00005	120
Gallbladder wall	0.00000	0.00002	0.00021	0.00023	14
LLI <sup>2</sup> Wall	0.00000	0.04561	0.00085	0.04645	83
Small intestine wall	0.00319	0.00360	0.00047	0.00726	45
Stomach wall	0.00000	0.00002	0.00011	0.00014	22
ULI <sup>3</sup> wall	0.00000	0.03149	0.00082	0.03232	50
Heart wall	0.00161	0.00007	0.00005	0.00173	42
Kidneys	0.00299	0.00011	0.00011	0.00321	36
Liver	0.00279	0.00010	0.00008	0.00298	36
Lungs	0.00109	0.00007	0.00005	0.00121	-- <sup>4</sup>
Muscle	0.00000	0.00002	0.00010	0.00012	41
Ovaries	0.00000	0.00002	0.00046	0.00049	40
Pancreas	0.00000	0.00002	0.00009	0.00011	43
Red marrow	0.13217	0.00642	0.00020	0.13879	41
Osteogenic cells	1.13689	0.01487	0.00030	1.15206	41
Skin	0.00000	0.00002	0.00005	0.00007	79
Spleen	0.00000	0.00002	0.00007	0.00009	54
Testes	0.00000	0.00002	0.00006	0.00008	59
Thymus	0.00000	0.00002	0.00003	0.00006	109
Thyroid	0.00000	0.00002	0.00005	0.00007	96
Urinary bladder wall	0.00371	0.00016	0.00016	0.00403	63
Uterus	0.00000	0.00002	0.00023	0.00026	28
Whole body	0.02220	0.00081	0.00012	0.02312	16

<sup>1</sup>As there was no uptake of radium-223 in most of the soft tissues observed, the alpha contribution to the total organ dose was set to zero for these organs.

<sup>2</sup>LLI: lower large intestine

<sup>3</sup>ULI: upper large intestine

<sup>4</sup>Absorbed dose data to the lung are based on model-derived calculation using pooled blood time-activity data from all subjects

The haematological adverse reactions observed in the clinical studies with Xofigo are much lower in frequency and severity than what could be expected from the calculated absorbed doses to the red marrow. This may be related to spatial distribution of alpha particle radiation resulting in non-uniform radiation dose to the red marrow.

## 12. INSTRUCTION FOR PREPARATION OF RADIOPHARMACEUTICALS

This medicinal product should be visually inspected before use. Xofigo is a clear, colourless solution and should not be used in case of discolouration, the occurrence of particulate matter or a defective container.

Xofigo is a ready-to-use solution and should not be diluted or mixed with any other solutions.

Each vial is for single use only.

The volume to be administered to a given patient should be calculated using the:

- Patient's body weight (kg)
- Dose level (55 kBq/kg body weight)
- Radioactivity concentration of the radiopharmaceutical (1100 kBq/mL) at reference date. The reference date is stated on the vial and lead pot label.
- Decay correction (DK) factor to correct for physical decay of radium-223. A table of DK factors is provided with each vial as part of the booklet (preceding the package leaflet).

The amount of radioactivity in the dispensed volume shall be confirmed by measurement in a properly calibrated activimeter.

The total volume to be administered to a patient is calculated as follows:

$$\text{Volume to be administered (mL)} = \frac{\text{Body weight (kg)} \times \text{activity (55 kBq/kg body weight)}}{\text{DK factor} \times 1100 \text{ kBq/mL}}$$

Any unused radiopharmaceutical or waste material should be disposed of in accordance with local requirements.

Detailed information on this radiopharmaceutical is available on the website of the European Medicines Agency <http://www.ema.europa.eu>

## **ANNEX II**

- A. MANUFACTURER RESPONSIBLE FOR BATCH RELEASE**
- B. CONDITIONS OR RESTRICTIONS REGARDING SUPPLY AND USE**
- C. OTHER CONDITIONS AND REQUIREMENTS OF THE MARKETING AUTHORISATION**
- D. CONDITIONS OR RESTRICTIONS WITH REGARD TO THE SAFE AND EFFECTIVE USE OF THE MEDICINAL PRODUCT**

## **A. MANUFACTURER RESPONSIBLE FOR BATCH RELEASE**

Name and address of the manufacturer responsible for batch release

Bayer AS  
Drammensveien 288  
NO-0283 Oslo  
Norway

## **B. CONDITIONS OR RESTRICTIONS REGARDING SUPPLY AND USE**

Medicinal product subject to restricted medical prescription (see Annex I: Summary of Product Characteristics, section 4.2).

## **C. OTHER CONDITIONS AND REQUIREMENTS OF THE MARKETING AUTHORISATION**

- **Periodic safety update reports (PSURs)**

The requirements for submission of PSURs for this medicinal product are set out in the list of Union reference dates (EURD list) provided for under Article 107c(7) of Directive 2001/83/EC and any subsequent updates published on the European medicines web-portal.

## **D. CONDITIONS OR RESTRICTIONS WITH REGARD TO THE SAFE AND EFFECTIVE USE OF THE MEDICINAL PRODUCT**

- **Risk management plan (RMP)**

The marketing authorisation holder (MAH) shall perform the required pharmacovigilance activities and interventions detailed in the agreed RMP presented in Module 1.8.2 of the marketing authorisation and any agreed subsequent updates of the RMP.

An updated RMP should be submitted:

- At the request of the European Medicines Agency;
- Whenever the risk management system is modified, especially as the result of new information being received that may lead to a significant change to the benefit/risk profile or as the result of an important (pharmacovigilance or risk minimisation) milestone being reached.

- **Obligation to conduct post-authorisation measures**

The MAH shall complete, within the stated timeframe, the below measures:

<b>Description</b>	<b>Due date</b>
<p>The MAH shall conduct and submit the results of a phase IV randomised open-label multicentre study according to an agreed protocol in order to further characterise the efficacy and safety, in particular the risk of fractures, the risk of formation of visceral and nodal metastases of radium-223 in the authorised indication.</p> <p>The protocol should foresee a stratified randomisation of patients according to total ALP levels.</p>	Q3 2025
<p>The MAH shall conduct and submit the results of a phase I biodistribution study according to an agreed protocol in order to further characterise correlation between the extent of the disease, the dose and the distribution of radium-223 in bone metastases versus sites of impaired bone health (e.g., osteoporosis) versus normal bone structure.</p>	Q1 2026

**ANNEX III**  
**LABELLING AND PACKAGE LEAFLET**

## **A. LABELLING**

**PARTICULARS TO APPEAR ON THE OUTER PACKAGING**

**LEAD POT**

**1. NAME OF THE MEDICINAL PRODUCT**

Xofigo 1100 kBq/mL solution for injection  
radium Ra 223 dichloride

**2. STATEMENT OF ACTIVE SUBSTANCE**

Each mL of solution contains 1100 kBq radium Ra 223 dichloride (radium-223 dichloride), corresponding to 0.58 ng radium-223 at the reference date.  
Each vial contains 6 mL of solution (6.6 MBq radium-223 dichloride at the reference date).

**3. LIST OF EXCIPIENTS**

Water for injections, sodium citrate, sodium chloride, hydrochloric acid. See leaflet for further information.

**4. PHARMACEUTICAL FORM AND CONTENTS**

Solution for injection

6 mL

1100 kBq/mL at 12 h (CET) ref. date: [DD/MM/YYYY]

6.6 MBq/vial at 12 h (CET) ref. date: [DD/MM/YYYY]

**5. METHOD AND ROUTE(S) OF ADMINISTRATION**

For intravenous use.

**6. SPECIAL WARNING THAT THE MEDICINAL PRODUCT MUST BE STORED OUT OF THE SIGHT AND REACH OF CHILDREN**

Keep out of the sight and reach of children.

**7. OTHER SPECIAL WARNING(S), IF NECESSARY**



**8. EXPIRY DATE**

EXP



**9. SPECIAL STORAGE CONDITIONS**

Storage should be in accordance with national regulation on radioactive materials.

**10. SPECIAL PRECAUTIONS FOR DISPOSAL OF UNUSED MEDICINAL PRODUCTS OR WASTE MATERIALS DERIVED FROM SUCH MEDICINAL PRODUCTS, IF APPROPRIATE**

**11. NAME AND ADDRESS OF THE MARKETING AUTHORISATION HOLDER**

Bayer AG  
51368 Leverkusen  
Germany

[Bayer logo]

**12. MARKETING AUTHORISATION NUMBER(S)**

EU/1/13/873/001

**13. BATCH NUMBER**

Lot

**14. GENERAL CLASSIFICATION FOR SUPPLY**

Medicinal product subject to medical prescription.

**15. INSTRUCTIONS ON USE**

**16. INFORMATION IN BRAILLE**

Justification for not including Braille accepted.

**17. UNIQUE IDENTIFIER – 2D BARCODE**

Not applicable.

**18. UNIQUE IDENTIFIER – HUMAN READABLE DATA**

Not applicable.

**MINIMUM PARTICULARS TO APPEAR ON SMALL IMMEDIATE PACKAGING UNITS**

**VIAL**

**1. NAME OF THE MEDICINAL PRODUCT AND ROUTE(S) OF ADMINISTRATION**

Xofigo 1100 kBq/mL solution for injection  
radium Ra 223 dichloride  
For intravenous use.

**2. METHOD OF ADMINISTRATION**

**3. EXPIRY DATE**

EXP

**4. BATCH NUMBER**

Lot

**5. CONTENTS BY WEIGHT, BY VOLUME OR BY UNIT**

6 mL  
6.6 MBq/vial at 12 h (CET) ref. date: [DD/MM/YYYY]

**6. OTHER**



[Bayer logo]

**B. PACKAGE LEAFLET**

## **Package leaflet: Information for the patient**

### **Xofigo 1100 kBq/mL solution for injection**

radium Ra 223 dichloride

▼ This medicine is subject to additional monitoring. This will allow quick identification of new safety information. You can help by reporting any side effects you may get. See the end of section 4 for how to report side effects.

**Read all of this leaflet carefully before you are given this medicine because it contains important information for you.**

- Keep this leaflet. You may need to read it again.
- If you have any further questions, ask your doctor who will supervise the procedure.
- If you get any side effects, talk to your doctor. This includes any possible side effects not listed in this leaflet. See section 4.

#### **What is in this leaflet**

1. What Xofigo is and what it is used for
2. What you need to know before Xofigo is used
3. How Xofigo is used
4. Possible side effects
5. How Xofigo is stored
6. Contents of the pack and other information

#### **1. What Xofigo is and what it is used for**

This medicine contains the active substance radium Ra 223 dichloride (radium-223 dichloride).

Xofigo is used to treat adults with advanced castration-resistant prostate cancer in progression after at least two other cancer treatments apart from treatments to maintain reduced levels of male hormone (hormone therapy), or who cannot take any other cancer treatment. Castration-resistant prostate cancer is a cancer of the prostate (a gland of the male reproductive system) that does not respond to treatment that reduces male hormones. Xofigo is only used when the disease has spread to the bone but is not known to have spread to other internal organs, and is causing symptoms (e.g., pain).

Xofigo contains the radioactive substance radium-223 which mimics the calcium found in bones. When injected into the patient, radium-223 reaches the bone where the cancer has spread to and emits short-range radiation (alpha particles) which kills the surrounding tumour cells.

#### **2. What you need to know before Xofigo is used**

##### **Xofigo must not be given**

- in combination with abiraterone and prednisone/prednisolone (which are used together to treat prostate cancer).

## Warnings and precautions

Talk to your doctor before you are given Xofigo

- Xofigo must not be given in combination with abiraterone and prednisone/prednisolone due to a possible increase in the risk of bone fracture or death. Additionally, there are uncertainties about the effects of Xofigo in combination with other medicines used to treat metastatic prostate cancer. If you are already taking one of those medicines, please tell your doctor.
- If you plan to take Xofigo following treatment with abiraterone and prednisone/prednisolone, you must wait 5 days before starting treatment with Xofigo.
- If you plan to take other cancer therapy following treatment with Xofigo, you must wait at least 30 days before starting treatment.
- Xofigo is not recommended if cancer in your bones is not causing symptoms, such as pain.
- Xofigo can lead to a decrease in the number of your blood cells and blood platelets. **Before starting treatment and before each subsequent dose your doctor will perform blood tests.** Depending on the results of these tests your doctor will decide if treatment can be started, can be continued, or needs to be postponed or discontinued.
- If you suffer from **decreased blood cell production in the bone marrow**, e.g., if you have received prior chemotherapy (other medicines used to kill cancer cells) and/or radiation therapy, you may be at higher risk and your doctor will give you Xofigo with caution.
- If your tumour has spread to the bone extensively, you may also be more likely to have decreases in your blood cells and platelets, so your doctor will give you Xofigo with caution.
- The limited data available do not suggest any major differences in the blood cell production of patients receiving chemotherapy after treatment with Xofigo compared with those who did not receive Xofigo.
- There are no data on the use of Xofigo in patients with **Crohn's disease** (a long-term inflammatory disease of the intestines) and with **ulcerative colitis** (a long-term inflammation of the colon). As Xofigo is excreted in the faeces, it may make acute inflammation of your bowels worse. Therefore, if you suffer from these conditions your doctor will carefully consider if you can be treated with Xofigo.
- If you suffer from untreated **spinal cord compression** or if it is thought likely that you are developing spinal cord compression (pressure on the spinal cord nerves which can be caused by a tumour or other lesion), your doctor will first treat this disease with standard treatment before starting or continuing treatment with Xofigo.
- If you have **osteoporosis** or a known increased risk for fractures (e.g., **recent bone fracture, fragility**), or take or have been taking **steroids** (e.g., prednisone/prednisolone), please tell your doctor. You might be at a higher risk of bone fractures. Your doctor might prescribe you a medicine to prevent bone fractures before starting or continuing treatment with Xofigo.
- If you experience any **new or unusual pain or swelling in bone region** prior, during or after your treatment with Xofigo, you should consult your doctor.
- If you experience a **bone fracture**, your doctor will first stabilise the fractured bone before starting or continuing treatment with Xofigo.
- If you take or have taken **bisphosphonates** or have received chemotherapy prior to treatment with Xofigo, please tell your doctor. A risk of *osteonecrosis of the jaw* (dead tissue in the jawbone which is mainly seen in patients who have been treated with bisphosphonates) cannot be excluded (see section 4).
- Xofigo contributes to your overall long-term cumulative radiation exposure. Long-term cumulative radiation exposure may increase your risk for developing cancer (in particular of bone cancer and leukaemia) and hereditary abnormalities. No cases of cancer caused by Xofigo have been reported in clinical studies with a follow-up of up to three years.

Your doctor will test your bone health before deciding whether you can be given Xofigo. During treatment and for 2 years after starting treatment with Xofigo, your doctor will continuously monitor your bone health.

## Children and adolescents

This medicine is not for use in children and adolescents.

## Other medicines and Xofigo

No interaction studies with other medicines have been done.

Xofigo must not be given in combination with abiraterone and prednisone/prednisolone due to a possible increase in the risk of bone fracture or death. Additionally, there are uncertainties about the effects of Xofigo in combination with other systemic medicines used to treat metastatic prostate cancer. If you are already taking one of those medicines, please tell your doctor.

If you take or have taken bisphosphonates or other medicines to protect your bone health or steroids (e.g., prednisone/prednisolone) prior to treatment with Xofigo, please tell your doctor. You might be at a higher risk for bone fractures.

If you are taking calcium, phosphate and/or Vitamin D, your doctor will carefully consider if you need to temporarily stop taking these substances before you start treatment with Xofigo.

There are no data on the **use of Xofigo at the same time as chemotherapy** (other medicines used to kill cancer cells). Xofigo and chemotherapy used together may further decrease the number of your blood cells and blood platelets.

Tell your doctor if you are taking, have recently taken or might take any other medicines, including medicines obtained without a prescription.

### **Pregnancy and breast-feeding**

Xofigo is not for use in women and must not be given to women who are, or may be, pregnant or who are breast-feeding.

### **Contraception in males and females**

If you are engaged in sexual activity with a woman who could become pregnant you are advised to use effective birth control methods during and up to 6 months after treatment with Xofigo.

### **Fertility**

There is a potential risk that radiation from Xofigo could affect your fertility. Please ask your doctor how this may affect you, especially if you are planning to have children in the future. You may wish to seek advice on conservation of sperm before treatment starts.

### **Driving and using machines**

It is considered unlikely that Xofigo will affect your ability to drive or to use machines.

### **Xofigo contains sodium**

Depending on the volume administered, this medicine can contain up to 54 mg sodium (main component of cooking/table salt) per dose. This is equivalent to 2.7% of the recommended maximum daily dietary intake of sodium for an adult.

## **3. How Xofigo is used**

There are strict laws on the use, handling and disposal of medicines like Xofigo. It will only be used in special controlled areas. This radiopharmaceutical will only be handled and given to you by people who are trained and qualified to use it safely. These persons will take special care for the safe use of this radiopharmaceutical and will keep you informed of their actions.

The dose you receive depends on your body weight. The doctor supervising the procedure will calculate the quantity of Xofigo to be used in your case.

The recommended dose of Xofigo is 55 kBq (Becquerel, the unit used to express radioactivity) per kilogram body weight.

No dose adjustment is necessary if you are 65 years of age or older or if you have reduced kidney or liver function.

### **Administration of Xofigo and conduct of the procedure**

Xofigo will be injected slowly via a needle into one of your veins (intravenously). The healthcare professional will flush the intravenous access line or cannula before and after injection with a sodium chloride solution.

### **Duration of the procedure**

- Xofigo is given once every 4 weeks for a total of 6 injections.
- There are no data available on the safety and efficacy of treatment with more than 6 injections of Xofigo.

### **After administration of Xofigo**

- Care should be taken when handling materials, such as bed linen, that come into contact with body fluids (such as spill of urine, faeces, vomiting etc.). Xofigo is excreted mainly via the faeces. The doctor will tell you if you need to take any special precautions after receiving this medicine. Contact your doctor if you have any questions.

### **If you have been given more Xofigo than you should**

An overdose is unlikely.

However, in the case of an accidental overdose, your doctor will start appropriate supportive treatment and will check you for changes in the number of blood cells, and for gastrointestinal symptoms (e.g. diarrhoea, nausea [feeling sick], vomiting).

If you have any further questions on the use of Xofigo, please ask the doctor who supervises the procedure.

## **4. Possible side effects**

Like all medicines, this medicine can cause side effects, although not everybody gets them.

**The most serious side effects** in patients receiving Xofigo are

- **decrease in the number of blood platelets** (thrombocytopenia),
- **decrease in the number of neutrophils, a type of white blood cells** (neutropenia, which may lead to an increased risk of infection).

**Contact your doctor immediately if you notice** the following symptoms as they may be signs of thrombocytopenia or neutropenia (see above):

- any **unusual bruising**,
- more **bleeding** than usual after injury,
- **fever**,
- or if you seem to be catching a lot of **infections**.

Your doctor will perform blood tests before starting treatment and before each injection to check your number of blood cells and platelets (see also section 2).

**The most frequent side effects** in patients receiving Xofigo (very common [may affect more than 1 in 10 people]) are:

- **diarrhoea, nausea (feeling sick), vomiting, thrombocytopenia (decrease in the number of blood platelets) and bone fracture**.

Risk of dehydration: tell your doctor if you have any of the following symptoms: dizziness, increased thirst, decreased urination or dry skin as these can all be symptoms of dehydration. It is important to avoid dehydration by drinking plenty of fluids.

## Other possible side effects are listed below by how likely they are:

### Common (may affect up to 1 in 10 people)

- decrease in the number of white blood cells (leukopenia)
- decrease in the number of neutrophils, a type of white blood cells (neutropenia, which may lead to an increased risk of infection)
- decrease in the number of red and white blood cells and blood platelets (pancytopenia)
- injection site reactions (e.g. redness of the skin [erythema], pain and swelling)

### Uncommon (may affect up to 1 in 100 people)

- decrease in the number of lymphocytes, a type of white blood cells (lymphopenia)
- weakened bones (osteoporosis)

Xofigo contributes to your overall long-term cumulative radiation exposure. Long-term cumulative radiation exposure may increase your risk of developing cancer (in particular of bone cancer and leukaemia) and hereditary abnormalities. No cases of cancer caused by Xofigo have been reported in clinical studies with a follow-up of up to three years.

If you have symptoms of pain, swelling or numbness of the jaw, a “heavy jaw feeling” or loosening of a tooth, please contact your doctor. Cases of *osteonecrosis of the jaw* (dead tissue in the jawbone which is mainly seen in patients who have been treated with bisphosphonates) have occurred in patients treated with Xofigo. All these cases were only seen in patients receiving bisphosphonates prior to or at the same time of treatment with Xofigo and chemotherapy prior to treatment with Xofigo.

### Reporting of side effects

If you get any side effects talk to your doctor. This includes any possible side effects not listed in this leaflet. You can also report side effects directly via [the national reporting system listed in Appendix V](#). By reporting side effects, you can help provide more information on the safety of this medicine.

## 5. How Xofigo is stored

You will not have to store this medicine. This medicine is stored under the responsibility of the specialist in appropriate premises. Storage of radiopharmaceuticals will be in accordance with national regulations on radioactive materials.

### The following information is intended for the specialist only:

Xofigo must not be used after the expiry date which is stated on the vial and the lead pot.

This medicine does not require any special temperature storage conditions.

Xofigo must not be used if discolouration, the occurrence of particulate matter or a defective container is noticed.

## 6. Contents of the pack and other information

### What Xofigo contains

- The **active substance** is: radium Ra 223 dichloride (radium-223 dichloride).

Each mL of solution contains 1100 kBq radium-223 dichloride, corresponding to 0.58 ng radium-223 at the reference date.

Each vial contains 6 mL of solution (6600 kBq radium-223 dichloride at the reference date).

- The **other ingredients** are: water for injections, sodium citrate, sodium chloride and diluted hydrochloric acid (see end of Section 2 for further information on sodium).



**What Xofigo looks like and contents of the pack**

Xofigo is a clear and colourless solution for injection. It is supplied in a colourless glass vial closed with a grey rubber stopper and aluminium seal. The vial contains 6 mL of solution. It is stored in a lead pot.

**Marketing Authorisation Holder**

Bayer AG  
51368 Leverkusen  
Germany

**Manufacturer**

Bayer AS  
Drammensveien 288  
NO-0283 Oslo  
Norway

For any information about this medicine, please contact the local representative of the Marketing Authorisation Holder:

**België / Belgique / Belgien**

Bayer SA-NV  
Tél/Tel: +32-(0)2-535 63 11

**България**

Байер България ЕООД  
Тел. +359-(0)2-424 72 80

**Česká republika**

Bayer s.r.o.  
Tel: +420 266 101 111

**Danmark**

Bayer A/S  
Tlf: +45-45 23 50 00

**Deutschland**

Bayer Vital GmbH  
Tel: +49 (0)214-30 513 48

**Eesti**

Bayer OÜ  
Tel: +372 655 8565

**Ελλάδα**

Bayer Ελλάς ABEE  
Τηλ: +30 210 61 87 500

**España**

Bayer Hispania S.L.  
Tel: +34-93-495 65 00

**France**

Bayer HealthCare  
Tél(N° vert): +33-(0)800 87 54 54

**Hrvatska**

Bayer d.o.o.  
Tel: + 385-(0)1-6599 900

**Ireland**

Bayer Limited  
Tel: +353 1 216 3300

**Ísland**

Icepharma hf.  
Sími: +354 540 8000

**Italia**

Bayer S.p.A.  
Tel: +39 02 397 81

**Lietuva**

UAB Bayer  
Tel. +37 05 23 36 868

**Luxembourg / Luxemburg**

Bayer SA-NV  
Tél/Tel: +32-(0)2-535 63 11

**Magyarország**

Bayer Hungária KFT  
Tel.:+36 14 87-41 00

**Malta**

Alfred Gera and Sons Ltd.  
Tel: +35 621 44 62 05

**Nederland**

Bayer B.V.  
Tel: +31-23-799 1000

**Norge**

Bayer AS  
Tlf. +47-23 13 05 00

**Österreich**

Bayer Austria Ges. m. b. H.  
Tel: +43-(0)1-711 46-0

**Polska**

Bayer Sp. z o.o.  
Tel.: +48 22 572 35 00

**Portugal**

Bayer Portugal, Lda.  
Tel: +351 21 416 42 00

**România**

SC Bayer SRL  
Tel: +40 21 529 59 00

**Slovenija**

Bayer d. o. o.  
Tel.: +386 (0)1 58 14 400

**Slovenská republika**

Bayer, spol. s r.o.  
Tel: +421 2 59 21 31 11

**Suomi/Finland**

Bayer Oy  
Puh/Tel: +358 20 785 21

**Κύπρος**  
NOVAGEM Limited  
Τηλ: +357 22 48 38 58

**Sverige**  
Bayer AB  
Tel: +46 (0) 8 580 223 00

**Latvija**  
SIA Bayer  
Tel: +371 67 84 55 63

**United Kingdom (Northern Ireland)**  
Bayer AG  
Tel: +44-(0) 118 206 3000

**This booklet was last revised in**

Detailed information on this medicine is available on the European Medicines Agency web site:  
<http://www.ema.europa.eu>.

-----  
The following information is intended for healthcare professionals only

The complete SmPC of Xofigo is provided as a tear-off section at the end of the printed leaflet in the product package, with the objective to provide healthcare professionals with other additional scientific and practical information about the administration and use of this radiopharmaceutical.