

**ANNEX I**  
**SUMMARY OF PRODUCT CHARACTERISTICS**

▼ This medicinal product is subject to additional monitoring. This will allow quick identification of new safety information. Healthcare professionals are asked to report any suspected adverse reactions. See section 4.8 for how to report adverse reactions.

## **1. NAME OF THE MEDICINAL PRODUCT**

JEMPERLI 500 mg concentrate for solution for infusion

## **2. QUALITATIVE AND QUANTITATIVE COMPOSITION**

One vial of 10 mL concentrate for solution for infusion contains 500 mg of dostarlimab.

Each mL of concentrate for solution for infusion contains 50 mg of dostarlimab.

Dostarlimab is an anti-programmed cell death protein-1 (PD-1) immunoglobulin G4 (IgG4) humanised monoclonal antibody (mAb), produced by recombinant DNA technology in mammalian Chinese hamster ovary (CHO) cells.

For the full list of excipients, see section 6.1.

## **3. PHARMACEUTICAL FORM**

Concentrate for solution for infusion (sterile concentrate).

Clear to slightly opalescent colourless to yellow solution, essentially free from visible particles.

The concentrate for solution for infusion has a pH of approximately 6.0 and an osmolality of approximately 300 mOsm/kg.

## **4. CLINICAL PARTICULARS**

### **4.1 Therapeutic indications**

JEMPERLI is indicated in combination with carboplatin and paclitaxel for the treatment of adult patients with mismatch repair deficient (dMMR)/ microsatellite instability-high (MSI-H) primary advanced or recurrent endometrial cancer (EC) and who are candidates for systemic therapy.

JEMPERLI is indicated as monotherapy for the treatment of adult patients with dMMR/MSI-H recurrent or advanced EC that has progressed on or following prior treatment with a platinum-containing regimen.

### **4.2 Posology and method of administration**

Therapy must be initiated and supervised by specialist physicians experienced in the treatment of cancer.

The identification of dMMR/MSI-H tumour status should be determined using a validated testing method such as IHC, PCR or NGS\* (see section 5.1 for information on assays used in the studies).

\*IHC=immunohistochemistry; PCR=polymerase chain reaction; NGS=next-generation sequencing.

### Posology

*JEMPERLI in combination with carboplatin and paclitaxel*

When JEMPERLI is administered in combination with carboplatin and paclitaxel, refer to the full Prescribing Information for the combination products (see also section 5.1).

The recommended dose is 500 mg dostarlimab every 3 weeks in combination with carboplatin and paclitaxel every 3 weeks for 6 cycles followed by 1000 mg dostarlimab as monotherapy every 6 weeks for all cycles thereafter.

The dosage regimen in combination with carboplatin and paclitaxel is presented in Table 1.

**Table 1. Dosage regimen for JEMPERLI in combination with carboplatin and paclitaxel**

	500 mg once every 3 weeks in combination with carboplatin and paclitaxel <sup>a</sup> (1 Cycle = 3 weeks)						1000 mg once every 6 weeks as monotherapy until disease progression or unacceptable toxicity (1 Cycle = 6 weeks)			
Cycle	Cycle 1	Cycle 2	Cycle 3	Cycle 4	Cycle 5	Cycle 6	Cycle 7	Cycle 8	Cycle 9	Continue dosing Q6W
Week	1	4	7	10	13	16	19	25	31	

3 weeks between Cycle 6 and Cycle 7

<sup>a</sup> Administer dostarlimab prior to carboplatin and paclitaxel on the same day.

Administration of dostarlimab should continue according to the recommended schedule until disease progression or unacceptable toxicity, or for a duration of up to 3 years (see section 5.1).

*JEMPERLI monotherapy*

The recommended dose as monotherapy is 500 mg dostarlimab every 3 weeks for 4 cycles followed by 1000 mg every 6 weeks for all cycles thereafter.

The dosage regimen as monotherapy is presented in Table 2.

**Table 2. Dosage regimen for JEMPERLI as monotherapy**

	500 mg Once Every 3 Weeks (1 Cycle = 3 weeks)				1000 mg Once Every 6 Weeks until disease progression or unacceptable toxicity (1 cycle = 6 weeks)			
Cycle	Cycle 1	Cycle 2	Cycle 3	Cycle 4	Cycle 5	Cycle 6	Cycle 7	Continue dosing Q6W
Week	1	4	7	10	13	19	25	

3 weeks between cycle 4 and cycle 5

Administration of dostarlimab should continue according to the recommended schedule until disease progression or unacceptable toxicity (see section 5.1).

*Dose modifications*

Dose reduction is not recommended. Dosing delay or discontinuation may be required based on individual safety and tolerability. Recommended modifications to manage adverse reactions are provided in Table 3.

Detailed guidelines for the management of immune-related adverse reactions and infusion-related reactions are described in section 4.4.

<b>Table 3. Recommended dose modifications for JEMPERLI</b>		
<b>Immune-related adverse reactions</b>	<b>Severity grade<sup>a</sup></b>	<b>Dose modification</b>
Colitis	2 or 3	Withhold dose. Restart dosing when toxicity resolves to grade 0 or 1.
	4	Permanently discontinue.
Hepatitis	Grade 2 with AST <sup>b</sup> or ALT <sup>c</sup> > 3 and up to 5 × ULN <sup>d</sup> or total bilirubin > 1.5 and up to 3 × ULN	Withhold dose. Restart dosing when toxicity resolves to grade 0 or 1.
	Grade ≥ 3 with AST or ALT > 5 × ULN or total bilirubin > 3 × ULN	Permanently discontinue (see exception below) <sup>e</sup> .
Type 1 diabetes mellitus (T1DM)	3 or 4 (hyperglycaemia)	Withhold dose. Restart dosing in appropriately managed, clinically and metabolically stable patients.
Hypophysitis or adrenal insufficiency	2, 3 or 4	Withhold dose. Restart dosing when toxicity resolves to grade 0 or 1. Permanently discontinue for recurrence or worsening while on adequate hormonal therapy.
Hypothyroidism or hyperthyroidism	3 or 4	Withhold dose. Restart dosing when toxicity resolves to grade 0 or 1.
Pneumonitis	2	Withhold dose. Restart dosing when toxicity resolves to grade 0 or 1. If grade 2 recurs, permanently discontinue.
	3 or 4	Permanently discontinue.
Nephritis	2	Withhold dose. Restart dosing when toxicity resolves to grade 0 or 1.
	3 or 4	Permanently discontinue.
Exfoliative dermatologic conditions (e.g. SJS, TEN, DRESS)	Suspected	Withhold dose for any grade. Restart dosing if not confirmed and when toxicity resolves to grade 0 or 1.

<b>Table 3. Recommended dose modifications for JEMPERLI</b>		
<b>Immune-related adverse reactions</b>	<b>Severity grade<sup>a</sup></b>	<b>Dose modification</b>
	Confirmed	Permanently discontinue.
Myocarditis	2, 3 or 4	Permanently discontinue.
Severe neurological toxicities (myasthenic syndrome/myasthenia gravis, Guillain-Barré syndrome, encephalitis, transverse myelitis)	2, 3 or 4	Permanently discontinue.
Other immune-related adverse reactions (including but not limited to myositis, sarcoidosis, autoimmune haemolytic anaemia, pancreatitis, iridocyclitis, uveitis, diabetic ketoacidosis, arthralgia, solid organ transplant rejection, graft-versus-host disease)	3	Withhold dose. Restart dosing when toxicity resolves to grade 0 or 1.
	4	Permanently discontinue.
Recurrence of immune-related adverse reactions after resolution to $\leq$ grade 1 (except for pneumonitis, see above)	3 or 4	Permanently discontinue.
<b>Other adverse reactions</b>	<b>Severity grade<sup>a</sup></b>	<b>Dose modification</b>
Infusion-related reactions	2	Withhold dose. If resolved within 1 hour of stopping, may be restarted at 50 % of the original infusion rate, or restart when symptoms resolve with pre-medication. If grade 2 recurs with adequate premedication, permanently discontinue.
	3 or 4	Permanently discontinue.

<sup>a</sup> Toxicity graded per National Cancer Institute Common Terminology Criteria for Adverse Events (CTCAE) version 5.0.

<sup>b</sup> AST = aspartate aminotransferase

<sup>c</sup> ALT = alanine aminotransferase

<sup>d</sup> ULN = upper limit of normal

<sup>e</sup> For patients with liver metastases who begin treatment with grade 2 increase of AST or ALT, if AST or ALT increases by  $\geq$  50 % relative to baseline and lasts for at least 1 week, then treatment should be discontinued.

### Patient Card

All prescribers of JEMPERLI should inform patients about the Patient Card, explaining what to do should they experience any symptom of immune-related adverse reactions. The physician will provide the Patient Card to each patient.

### Special populations

#### *Elderly*

No dose adjustment is recommended for patients who are aged 65 years or over.

There are limited clinical data with dostarlimab in patients aged 75 years or over (see section 5.1).

#### *Renal impairment*

No dose adjustment is recommended for patients with mild or moderate renal impairment. There are limited data in patients with severe renal impairment or end-stage renal disease undergoing dialysis (see section 5.2).

#### *Hepatic impairment*

No dose adjustment is recommended for patients with mild hepatic impairment. There are limited data in patients with moderate hepatic impairment and no data in patients with severe hepatic impairment (see section 5.2).

### Paediatric population

The safety and efficacy of JEMPERLI in children and adolescents aged under 18 years have not been established. No data are available.

### Method of administration

JEMPERLI is for intravenous infusion only. JEMPERLI should be administered by intravenous infusion using an intravenous infusion pump over 30 minutes.

JEMPERLI must not be administered as an intravenous push or bolus injection.

For instructions on dilution of the medicinal product before administration, see section 6.6.

## **4.3 Contraindications**

Hypersensitivity to the active substance or to any of the excipients listed in section 6.1.

## **4.4 Special warnings and precautions for use**

### Traceability

In order to improve the traceability of biological medicinal products, the tradename and the batch number of the administered product should be clearly recorded.

### Immune-related adverse reactions

Immune-related adverse reactions, which may be severe or fatal, can occur in patients treated with antibodies blocking the programmed cell death protein-1 / programmed death-ligand 1 (PD-1/PD-L1) pathway, including dostarlimab. While immune-related adverse reactions usually occur during treatment with PD-1/PD-L1 blocking antibodies, symptoms can also manifest after discontinuation of treatment. Immune-related adverse reactions may occur in any organ or tissue and may affect more than one body system simultaneously. Important immune-related adverse reactions listed in this section are not inclusive of all possible severe and fatal immune-related reactions.

Early identification and management of immune-related adverse reactions are essential to ensure safe use of PD-1/PD-L1 blocking antibodies. Patients should be monitored for symptoms and signs of immune-related adverse reactions. Haematological and clinical chemistries, including liver, kidney and thyroid function tests, should be evaluated at baseline and periodically during treatment. For suspected immune-related adverse reactions, adequate evaluation including specialty consultation should be ensured.

Based on the severity of the adverse reaction, treatment with dostarlimab should be withheld or permanently discontinued and corticosteroids (1 to 2 mg/kg/day prednisone or equivalent) or other appropriate therapy administered (see below and section 4.2). Upon improvement to grade  $\leq 1$ , corticosteroid taper should be initiated and continued for 1 month or longer. Based on limited data from clinical studies in patients whose immune-related adverse reactions could not be controlled with corticosteroid use, administration of other systemic immunosuppressants can be considered. Hormone replacement therapy for endocrinopathies should be instituted as warranted.

Treatment with dostarlimab should be permanently discontinued for any grade 3 immune-related adverse reaction that recurs and for any grade 4 immune-related adverse reaction toxicity, except for endocrinopathies that are controlled with replacement hormones and unless otherwise specified in Table 3.

#### Immune-related pneumonitis

Pneumonitis has been reported in patients receiving dostarlimab (see section 4.8). Patients should be monitored for signs and symptoms of pneumonitis. Suspected pneumonitis should be confirmed with radiographic imaging and other causes excluded. Patients should be managed with dostarlimab treatment modifications and corticosteroids (see section 4.2).

#### Immune-related colitis

Dostarlimab can cause immune-related colitis (see section 4.8). Patients should be monitored for signs and symptoms of colitis and managed with dostarlimab treatment modifications, anti-diarrhoeal agents and corticosteroids (see section 4.2).

#### Immune-related hepatitis

Dostarlimab can cause immune-related hepatitis (see section 4.8). Patients should be monitored for changes in liver function periodically as indicated, based on clinical evaluation and managed with dostarlimab treatment modifications and corticosteroids (see section 4.2).

#### Immune-related endocrinopathies

Immune-related endocrinopathies, including hypothyroidism, hyperthyroidism, thyroiditis, hypophysitis, type 1 diabetes mellitus, diabetic ketoacidosis and adrenal insufficiency, have been reported in patients receiving dostarlimab (see section 4.8).

#### Hypothyroidism and hyperthyroidism

Immune-related hypothyroidism and hyperthyroidism (including thyroiditis) occurred in patients receiving dostarlimab, and hypothyroidism may follow hyperthyroidism. Patients should be monitored for abnormal thyroid function tests prior to and periodically during treatment and as indicated based on clinical evaluation. Immune-related hypothyroidism and hyperthyroidism (including thyroiditis) should be managed as recommended in section 4.2.

#### Adrenal insufficiency

Immune-related adrenal insufficiency occurred in patients receiving dostarlimab. Patients should be monitored for clinical signs and symptoms of adrenal insufficiency. For symptomatic adrenal insufficiency, patients should be managed as recommended in section 4.2.

#### Immune-related nephritis

Dostarlimab can cause immune-related nephritis (see section 4.8). Patients should be monitored for changes in renal function and manage with dostarlimab treatment modifications and corticosteroids (see section 4.2).

#### Immune-related rash

Immune-related rash has been reported in patients receiving dostarlimab, including pemphigoid (see section 4.8). Patients should be monitored for signs and symptoms of rash. Exfoliative dermatologic conditions should be managed as recommended in section 4.2. Events of Stevens-Johnson Syndrome or toxic epidermal necrolysis have been reported in patients treated with PD-1 inhibitors.

Caution should be used when considering the use of dostarlimab in a patient who has previously experienced a severe or life-threatening skin adverse reaction on prior treatment with other immune-stimulatory anticancer agents.

#### Immune-related arthralgia

Immune-related arthralgia has been reported in patients receiving dostarlimab (see section 4.8). Patients should be monitored for signs and symptoms of arthralgia. Suspected immune-related arthralgia should be confirmed and other causes excluded. Patients should be managed with dostarlimab treatment modifications and corticosteroids (see section 4.2).

#### Other immune-related adverse reactions

Given the mechanism of action of dostarlimab other potential immune-related adverse reactions may occur, including potentially serious events [e.g. myositis, myocarditis, encephalitis, demyelinating neuropathy (including Guillain Barré syndrome), sarcoidosis]. Clinically significant immune-related adverse reactions reported in less than 1 % of patients treated with dostarlimab as monotherapy in clinical studies include encephalitis, autoimmune haemolytic anaemia, pancreatitis, iridocyclitis and uveitis. Patients should be monitored for signs and symptoms of immune-related adverse reactions and managed as described in section 4.2. Solid organ transplant rejection has been reported in the post-marketing setting in patients treated with PD-1 inhibitors. Treatment with dostarlimab may increase the risk of rejection in solid organ transplant recipients. The benefit of treatment with dostarlimab versus the risk of possible organ rejection should be considered in these patients.

Fatal and other serious complications can occur in patients who receive allogeneic haematopoietic stem cell transplantation (HSCT) before or after being treated with a PD-1/PD-L1–blocking antibody. Transplant-related complications include hyperacute graft-versus-host disease (GvHD), acute GvHD, chronic GvHD, hepatic veno-occlusive disease after reduced intensity conditioning, and steroid-requiring febrile syndrome (without an identified infectious cause). These complications may occur despite intervening therapy between PD-1/PD-L1 blockade and allogeneic HSCT. Follow patients closely for evidence of transplant-related complications and intervene promptly. Consider the benefit versus risks of treatment with a PD-1/PD-L1–blocking antibody prior to or after an allogeneic HSCT.

#### Infusion-related reactions

Dostarlimab can cause infusion-related reactions, which can be severe (see section 4.8). For severe (grade 3) or life-threatening (grade 4) infusion-related reactions, the infusion should be stopped and treatment should be permanently discontinued (see section 4.2).

#### Patients excluded from clinical studies

Patients with the following status were excluded from the GARNET study: Eastern Cooperative Oncology Group (ECOG) baseline performance score (PS)  $\geq 2$ ; uncontrolled central nervous system metastases or carcinomatous meningitis; other malignancies within the last 2 years; immunodeficiency or receiving immunosuppressive therapy within 7 days; active HIV, hepatitis B or hepatitis C infection; active autoimmune disease requiring systemic treatment in the past 2 years excluding replacement therapy; history of interstitial lung disease; or receiving live vaccine within 14 days.

#### Sodium content



This medicinal product contains less than 1 mmol sodium (23 mg) per 500 mg dose, i.e. essentially 'sodium-free'.

#### **4.5 Interaction with other medicinal products and other forms of interaction**

No interaction studies have been performed. Monoclonal antibodies (mAb) such as dostarlimab are not substrates for cytochrome P450 or active substance transporters. Dostarlimab is not a cytokine and is unlikely to be a cytokine modulator. Additionally, pharmacokinetic (PK) interaction of dostarlimab with small molecule active substances is not expected. There is no evidence of interaction mediated by non-specific clearance of lysosome degradation for antibodies.

#### **4.6 Fertility, pregnancy and lactation**

##### Women of childbearing potential/Contraception

There is a risk associated with the administration of dostarlimab to women of childbearing potential. Women of childbearing potential must use effective contraception during treatment with dostarlimab and until 4 months after the last dose of dostarlimab.

##### Pregnancy

There are no or limited amount of data on the use of dostarlimab in pregnant women. Based on its mechanism of action, dostarlimab can cause foetal harmful pharmacological effects when administered during pregnancy.

Animal reproduction and development studies have not been conducted with dostarlimab; however, inhibition of the PD-1/PD-L1 pathway can lead to increased risk of immune-mediated rejection of the developing foetus resulting in foetal death (see section 5.3). Human immunoglobulins (IgG4) are known to cross the placental barrier, and therefore, being an IgG4, dostarlimab has the potential to be transmitted from the mother to the developing foetus.

JEMPERLI is not recommended during pregnancy and in women of childbearing potential not using effective contraception.

##### Breast-feeding

It is unknown whether dostarlimab/metabolites are excreted in human milk.

A risk to the newborns/infants cannot be excluded.

JEMPERLI should not be used during breast-feeding and breast-feeding should be avoided for at least 4 months after the last dose of dostarlimab.

##### Fertility

Fertility studies have not been conducted with dostarlimab (see section 5.3).

#### **4.7 Effects on ability to drive and use machines**

JEMPERLI has no or negligible influence on the ability to drive and use machines.

#### **4.8 Undesirable effects**

##### Summary of the safety profile

Dostarlimab is most commonly associated with immune-related adverse reactions. Most of these, including severe reactions, resolved following initiation of appropriate medical therapy or withdrawal of dostarlimab (see “Description of selected adverse reactions” below).

#### *Dostarlimab in monotherapy*

The safety of dostarlimab has been evaluated in 605 patients with EC or other advanced solid tumours who received dostarlimab monotherapy in the GARNET study, including 153 patients with advanced or recurrent dMMR/MSI-H EC. Patients received doses of 500 mg every 3 weeks for 4 cycles followed by 1000 mg every 6 weeks for all cycles thereafter.

In patients with advanced or recurrent solid tumours (N = 605), the most common adverse reactions (> 10 %) were anaemia (28.6 %), diarrhoea (26.0 %), nausea (25.8 %), vomiting (19.0 %), arthralgia (17.0 %), pruritus (14.2 %), rash (13.2 %), pyrexia (12.4 %), aspartate aminotransferase increased (11.2 %) and hypothyroidism (11.2 %). JEMPERLI was permanently discontinued due to adverse reactions in 38 (6.3 %) patients; most of them were immune-related events. Adverse reactions were serious in 11.2 % of patients; most serious adverse reactions were immune-related adverse reactions (see section 4.4).

The safety profile for patients with dMMR/MSI-H EC in the GARNET study (N = 153) was not different from that of the overall monotherapy population presented in Table 4.

#### *Dostarlimab in combination with carboplatin and paclitaxel*

The safety of dostarlimab has been evaluated in 241 patients with primary advanced or recurrent EC who received dostarlimab in combination with carboplatin and paclitaxel in the RUBY study. Patients received doses of 500 mg dostarlimab every 3 weeks for 6 cycles followed by 1000 mg every 6 weeks for all cycles thereafter.

In patients with primary advanced or recurrent EC (N = 241), the most common adverse reactions (> 10 %) were rash (22.8 %), rash maculopapular (14.1 %), hypothyroidism (14.1 %), alanine aminotransferase increased (12.9 %), aspartate aminotransferase increased (12.0 %), pyrexia (12.0 %) and dry skin (10.4 %). JEMPERLI was permanently discontinued due to adverse reactions in 12 (5.0 %) patients; most were immune-related events. Adverse reactions were serious in 5.8 % of patients; most serious adverse reactions were immune-related adverse reactions (see section 4.4).

In the RUBY study the safety profile for patients with dMMR/MSI-H EC (N = 52) was not different from that of the overall population (N = 241) presented in Table 4.

#### Tabulated list of adverse reactions

Adverse reactions reported in clinical trials of dostarlimab as a monotherapy or in combination with chemotherapy are listed in Table 4 by system organ class and by frequency. The frequencies of adverse reactions listed in the dostarlimab monotherapy column are based on all-cause adverse event frequency identified in 605 patients with advanced or recurrent solid tumours from the GARNET study exposed to dostarlimab monotherapy for a median duration of treatment of 24 weeks (range: 1 week to 229 weeks). Unless otherwise stated, the frequencies of adverse reactions listed in the dostarlimab in combination with chemotherapy column are based on all-cause adverse event frequency identified in 241 patients with primary advanced or recurrent EC from the RUBY study exposed to dostarlimab in combination with carboplatin and paclitaxel for a median duration of treatment of 43 weeks (range: 3 to 151 weeks). For additional safety information when dostarlimab is administered in combination with carboplatin and paclitaxel, refer to the respective Prescribing Information for the combination products.

Adverse reactions known to occur with dostarlimab as monotherapy, or with carboplatin or paclitaxel given alone, may occur during treatment with these medicinal products in combination, even if these

reactions were not reported in clinical studies with dostarlimab in combination with carboplatin and paclitaxel. These reactions are presented by system organ class and by frequency. Frequencies are defined as: very common ( $\geq 1/10$ ); common ( $\geq 1/100$  to  $< 1/10$ ); uncommon ( $\geq 1/1000$  to  $< 1/100$ ); rare ( $\geq 1/10000$  to  $< 1/1000$ ); very rare ( $< 1/10000$ ); and not known (cannot be estimated from the available data).

**Table 4: Adverse reactions in patients treated with dostarlimab**

	<b>Dostarlimab monotherapy</b>	<b>Dostarlimab in combination with chemotherapy</b>
<b>Blood and lymphatic system disorders</b>		
Very common	Anaemia <sup>a</sup>	
<b>Endocrine disorders</b>		
Very common	Hypothyroidism <sup>*b</sup>	Hypothyroidism <sup>c</sup>
Common	Hyperthyroidism*, adrenal insufficiency*	Hyperthyroidism, adrenal insufficiency
Uncommon	Thyroiditis <sup>*c</sup> , hypophysitis <sup>d</sup>	Thyroiditis
<b>Metabolism and nutrition disorders</b>		
Uncommon	Type 1 diabetes mellitus, diabetic ketoacidosis	Type 1 diabetes mellitus
<b>Nervous system disorders</b>		
Uncommon	Encephalitis, myasthenia gravis	Myasthenic syndrome <sup>f</sup>
<b>Eye disorders</b>		
Uncommon	Uveitis <sup>g</sup>	Uveitis
<b>Cardiac disorders</b>		
Uncommon		Myocarditis <sup>h</sup>
<b>Respiratory, thoracic and mediastinal disorders</b>		
Common	Pneumonitis <sup>*i</sup>	Pneumonitis
<b>Gastrointestinal disorders</b>		
Very common	Diarrhoea, nausea, vomiting	
Common	Colitis <sup>*j</sup> , pancreatitis <sup>k</sup> , gastritis	Colitis <sup>l</sup>
Uncommon	Oesophagitis	Pancreatitis, immune mediated gastritis <sup>f</sup> , vasculitis gastrointestinal <sup>f</sup>
<b>Hepatobiliary disorders</b>		
Common	Hepatitis <sup>*m</sup>	
<b>Skin and subcutaneous tissue disorders</b>		
Very common	Rash <sup>*n</sup> , pruritus	Rash <sup>o</sup> , dry skin
<b>Musculoskeletal and connective tissue disorders</b>		
Very common	Arthralgia <sup>*</sup>	
Common	Myalgia	
Uncommon	Immune-mediated arthritis, polymyalgia rheumatica, immune-mediated myositis	Immune-mediated arthritis, myositis <sup>p</sup>
<b>Renal and urinary disorders</b>		
Uncommon	Nephritis <sup>*q</sup>	
<b>General disorders and administration site conditions</b>		
Very common	Pyrexia	Pyrexia
Common	Chills	
Uncommon		Systemic inflammatory response syndrome <sup>p</sup>
<b>Investigations</b>		

	<b>Dostarlimab monotherapy</b>	<b>Dostarlimab in combination with chemotherapy</b>
Very common	Transaminases increased <sup>f</sup>	Alanine aminotransferase increased, aspartate aminotransferase increased
<b>Injury, poisoning and procedural complications</b>		
Common	Infusion-related reaction <sup>*s</sup>	

\* See section 'Description of selected adverse reactions.'

<sup>a</sup> Includes anaemia and autoimmune haemolytic anaemia

<sup>b</sup> Includes hypothyroidism and autoimmune hypothyroidism

<sup>c</sup> Includes thyroiditis and autoimmune thyroiditis

<sup>d</sup> Includes hypophysitis and lymphocytic hypophysitis

<sup>e</sup> Includes hypothyroidism and immune-mediated hypothyroidism

<sup>f</sup> Reported from ongoing blinded trial of dostarlimab in combination; estimated frequency category

<sup>g</sup> Includes uveitis and iridocyclitis

<sup>h</sup> Includes myocarditis (combination with chemotherapy) and immune-mediated myocarditis from ongoing blinded trial of dostarlimab in combination; estimated frequency category

<sup>i</sup> Includes pneumonitis, interstitial lung disease and immune-mediated lung disease

<sup>j</sup> Includes colitis, enterocolitis and immune-mediated enterocolitis

<sup>k</sup> Includes pancreatitis and pancreatitis acute

<sup>l</sup> Includes colitis (combination with chemotherapy) and enteritis reported from ongoing trial of dostarlimab in combination

<sup>m</sup> Includes hepatitis, autoimmune hepatitis and hepatic cytolysis

<sup>n</sup> Includes rash, rash maculo-papular, erythema, rash macular, rash pruritic, rash erythematous, rash papular, erythema multiforme, skin toxicity, drug eruption, toxic skin eruption, exfoliative rash and pemphigoid

<sup>o</sup> Includes rash and rash maculo-papular

<sup>p</sup> Reported in ongoing trial of dostarlimab in combination

<sup>q</sup> Includes nephritis and tubulointerstitial nephritis

<sup>r</sup> Includes transaminases increased, alanine aminotransferases increased, aspartate aminotransferases increased and hypertransaminasaemia

<sup>s</sup> Includes infusion-related reaction and hypersensitivity.

### Description of selected adverse reactions

The selected adverse reactions described below are based on the safety of dostarlimab in a combined monotherapy safety database of 605 patients in the GARNET study in patients with EC or other advanced solid tumours. Immune-related adverse reactions were defined as events of grade 2 and above; the frequencies below exclude grade 1 events. The management guidelines for these adverse reactions are described in section 4.2.

#### Immune-related adverse reactions (see section 4.4)

##### *Immune-related pneumonitis*

Immune-related pneumonitis occurred in 14 (2.3 %) patients, including grade 2 (1.3 %), grade 3 (0.8 %) and grade 4 (0.2 %) pneumonitis. Pneumonitis led to discontinuation of dostarlimab in 8 (1.3 %) patients.

Systemic corticosteroids (prednisone  $\geq$  40 mg per day or equivalent) were required in 11 (78.6 %) patients experiencing pneumonitis. Pneumonitis resolved in 11 (78.6 %) patients.

##### *Immune-related colitis*

Colitis occurred in 8 (1.3 %) patients, including grade 2 (0.7 %) and grade 3 (0.7 %) colitis. Colitis did not lead to discontinuation of dostarlimab in any patients.

Systemic corticosteroids (prednisone  $\geq$  40 mg per day or equivalent) were required in 5 (62.5 %) patients. Colitis resolved in 5 (62.5 %) patients experiencing colitis.

#### *Immune-related hepatitis*

Hepatitis occurred in 3 (0.5 %) patients, all of which were grade 3. Systemic corticosteroids (prednisone  $\geq$  40 mg per day or equivalent) were required in 2 (66.7 %) patients. Hepatitis led to discontinuation of dostarlimab in 1 (0.2%) patient and resolved in 2 of the 3 patients.

#### *Immune-mediated endocrinopathies*

Hypothyroidism occurred in 46 (7.6 %) patients, all of which were grade 2. Hypothyroidism did not lead to discontinuation of dostarlimab and resolved in 17 (37.0 %) patients.

Hyperthyroidism occurred in 14 (2.3 %) patients, including grade 2 (2.1 %) and grade 3 (0.2 %). Hyperthyroidism did not lead to discontinuation of dostarlimab and resolved in 10 (71.4 %) patients.

Thyroiditis occurred in 3 (0.5 %) patients; all were grade 2. None of the events of thyroiditis resolved; there were no discontinuations of dostarlimab due to thyroiditis.

Adrenal insufficiency occurred in 7 (1.2 %) patients, including grade 2 (0.5 %), and grade 3 (0.7 %). Adrenal insufficiency resulted in discontinuation of dostarlimab in 1 (0.2 %) patient and resolved in 4 (57.1 %) patients.

#### *Immune-mediated nephritis*

Nephritis, including tubulointerstitial nephritis, occurred in 3 (0.5 %) patients; all were grade 2. Systemic corticosteroids (prednisone  $\geq$  40 mg per day or equivalent) were required in 2 (66.7 %) patients experiencing nephritis. Nephritis led to discontinuation of dostarlimab in 1 (0.2 %) patient and resolved in all 3 patients.

#### *Immune-related rash*

Immune-related rash (rash, rash maculo-papular, rash macular, rash pruritic, pemphigoid, drug eruption, skin toxicity, toxic skin eruption) occurred in 31 (5.1 %) patients, including grade 3 in 9 (1.5 %) patients receiving dostarlimab. The median time to onset of rash was 57 days (range 2 days to 1485 days). Systemic corticosteroids (prednisone  $\geq$  40 mg per day or equivalent) were required in 9 (29.0 %) patients experiencing rash. Rash led to discontinuation of dostarlimab in 1 (0.2 %) patient and resolved in 24 (77.4 %) patients.

#### *Immune-related arthralgia*

Immune-related arthralgia occurred in 34 (5.6 %) patients. Grade 3 immune-related arthralgia was reported in 5 (0.8 %) patients receiving dostarlimab. The median time to onset of arthralgia was 94.5 days (range 1 day to 840 days). Systemic corticosteroids (prednisone  $\geq$  40 mg per day or equivalent) were required in 3 (8.8 %) patients experiencing arthralgia. Arthralgia led to discontinuation of dostarlimab in 1 (0.2 %) patient and resolved in 19 (55.9 %) patients experiencing arthralgia.

#### *Infusion-related reactions*

Infusion-related reactions including hypersensitivity occurred in 6 (1.0 %) patients, including grade 2 (0.3 %) and grade 3 (0.2 %) infusion-related reactions. All patients recovered from the infusion-related reaction.

#### Immunogenicity

In the GARNET study, anti-drug antibodies (ADA) were tested in 315 patients who received dostarlimab and the incidence of dostarlimab treatment-emergent ADAs was 2.5 %. Neutralising antibodies were detected in 1.3 % of patients. Co-administration with carboplatin and paclitaxel did not affect dostarlimab immunogenicity. In the RUBY study, of the 225 patients who were treated with dostarlimab in

combination with carboplatin and paclitaxel and evaluable for the presence of ADAs, there was no incidence of dostarlimab treatment-emergent ADA or treatment-emergent neutralising antibodies.

In the patients who developed ADAs, there was no evidence of altered efficacy or safety of dostarlimab.

#### Elderly population

Of the 605 patients treated with dostarlimab monotherapy, 51.6 % were under 65 years, 36.9 % were 65 to less than 75 years, and 11.5 % were 75 years or older. No overall differences in safety were reported between elderly ( $\geq 65$  years) and younger patients ( $< 65$  years).

#### Reporting of suspected adverse reactions

Reporting suspected adverse reactions after authorisation of the medicinal product is important. It allows continued monitoring of the benefit/risk balance of the medicinal product. Healthcare professionals are asked to report any suspected adverse reactions via the national reporting system listed in [Appendix V](#).

### **4.9 Overdose**

If overdose is suspected, the patient should be monitored for any signs or symptoms of adverse reactions or effects, and appropriate symptomatic treatment instituted.

## **5. PHARMACOLOGICAL PROPERTIES**

### **5.1 Pharmacodynamic properties**

Pharmacotherapeutic group: Anti-neoplastic agents, monoclonal antibodies and antibody drug conjugates, ATC code: L01FF07

#### Mechanism of action

Dostarlimab is a humanised mAb of the IgG4 isotype that binds to PD-1 receptors and blocks the interactions of binding with its ligands PD-L1 and PD-L2. The inhibition of PD-1 pathway-mediated immune response results in reactivation of T-cell function such as proliferation, cytokine production, and cytotoxic activity. Dostarlimab potentiates T-cell responses, including anti-tumour immuno responses through blockade of PD-1 binding to PD-L1 and PD-L2. In syngeneic mouse tumour models, blocking PD-1 activity resulted in decreased tumour growth.

#### Clinical efficacy and safety

*RUBY: Randomised controlled study of dostarlimab in combination with carboplatin and paclitaxel in treatment of adult patients with primary advanced or recurrent EC*

The efficacy and safety of dostarlimab in combination with carboplatin-paclitaxel were investigated in a multicentre, randomised, double blinded, placebo-controlled Phase 3 study conducted in patients with primary advanced or recurrent EC.

Patients were randomised (1:1) to receive dostarlimab 500 mg plus carboplatin AUC 5 mg/mL/min and paclitaxel 175 mg/m<sup>2</sup> every 3 weeks for 6 cycles followed by dostarlimab 1000 mg every 6 weeks (n = 245) or placebo plus carboplatin AUC 5 mg/mL/min and paclitaxel 175 mg/m<sup>2</sup> every 3 weeks for 6 cycles followed by placebo every 6 weeks (n = 249). Randomisation was stratified by MMR/MSI status, prior external pelvic radiotherapy, and disease status (recurrent, primary Stage III, or primary Stage IV). Treatment continued for up to 3 years or until unacceptable toxicity, disease progression or investigator

decision. Assessment of tumour status was performed every 6 weeks through week 25, every 9 weeks through week 52 and every 12 weeks thereafter. After a median follow-up of 30 months, 6 out of 53 patients randomised to dostarlimab plus carboplatin-paclitaxel have received treatment for >3 years (cut-off date 01 Mar 2023).

The key eligibility criteria for the study were International Federation of Gynaecology and Obstetrics (FIGO) primary Stage III or Stage IV disease, including Stage IIIA to IIIC1 disease with presence of evaluable or measurable disease per RECIST v.1.1, Stage IIIC1 patients with carcinosarcoma, clear cell, serous, or mixed histology (containing  $\geq 10\%$  carcinosarcoma, clear cell, or serous histology) regardless of presence of evaluable or measurable disease on imaging, Stage IIIC2 or Stage IV disease regardless of presence of evaluable or measurable disease. The study also included patients with first recurrent EC with a low potential for cure by radiation therapy or surgery alone or in combination, including patients who had first recurrent disease and were naïve to systemic anticancer therapy or who had received prior neo-adjuvant/adjuvant systemic anticancer therapy and had a recurrence or progressive disease  $\geq 6$  months after completing treatment (first recurrence). Prior radiation was not permitted within 21 days of study treatment excluding palliative radiotherapy which was permitted within up to 1 week of study treatment.

The primary efficacy outcome measures were progression-free survival (PFS) assessed by the investigator according to RECIST v1.1 in subjects with dMMR/MSI-H primary advanced or recurrent EC and in all subjects (overall ITT population) with primary advanced or recurrent EC, and overall survival (OS) in all subjects (overall ITT population) with primary advanced or recurrent EC.

A total of 118 patients with dMMR/MSI-H EC were evaluated for efficacy in the RUBY study. Baseline demographics and characteristics were: median age 64 years (34% aged 65 to 74 years and 15% aged 75 years or older); 85% White, 9% Black, 2% Asian; ECOG PS 0 (57%) or 1 (43%); primary stage III 21%, primary stage IV 30%, recurrent EC 49%; endometrioid carcinoma 85%, mixed carcinoma 5%, carcinosarcoma 4%, serous carcinoma 2%, other 4%; and prior surgery 92%, prior radiotherapy (35%), prior anti-cancer therapy (14%).

The identification of dMMR/MSI-H tumour status was prospectively determined based on local testing assays (IHC, PCR or NGS), or central testing (IHC) when no local result was available.

Efficacy results are shown in Table 5 and Figure 1. All endpoints are presented at the primary analysis for PFS with median follow up of 25 months. OS results are based on the first OS interim analysis. The RUBY study demonstrated a statistically significant improvement in PFS by investigator in patients randomised to dostarlimab plus carboplatin-paclitaxel versus placebo plus carboplatin-paclitaxel.

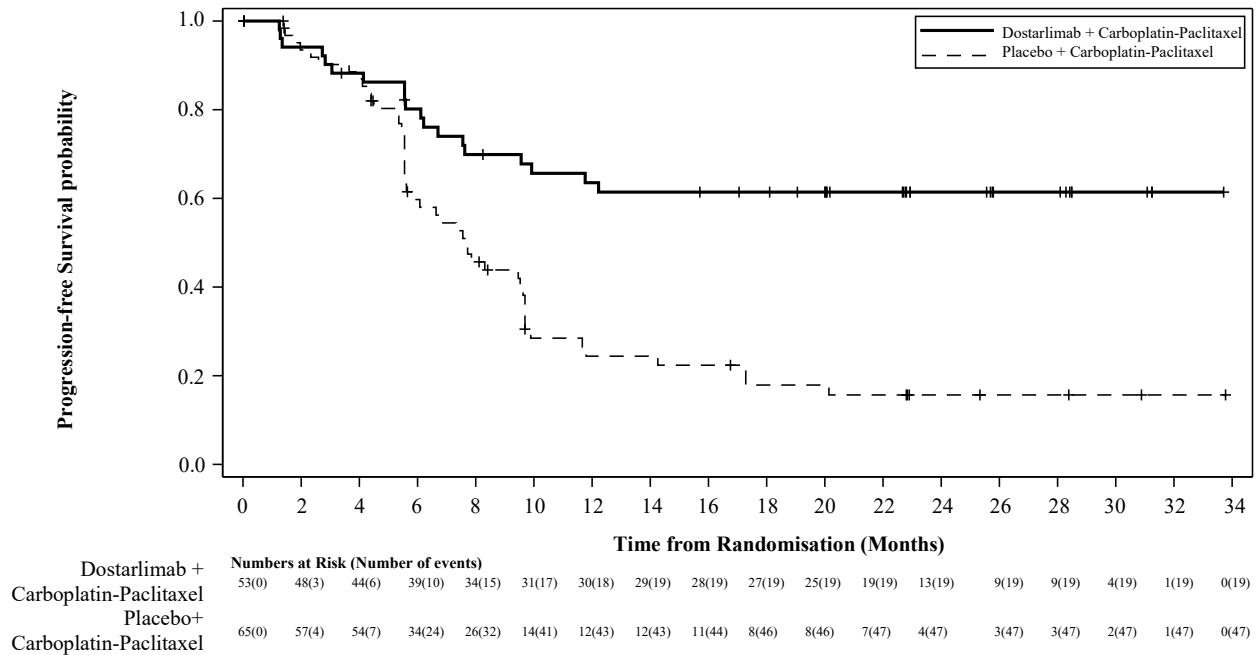
**Table 5: Efficacy results in RUBY for patients with dMMR/MSI-H EC**

Endpoint	Dostarlimab + carboplatin-paclitaxel (N=53) <sup>a</sup>	Placebo + carboplatin-paclitaxel (N=65) <sup>a</sup>
<b>Progression free-survival (PFS)</b>		
Median in months (95% CI) <sup>b</sup>	Not reached	7.7 (5.6, 9.7)
Number (%) of patients with event	19 (35.8)	47 (72.3)
Hazard ratio (95% CI) <sup>c</sup>	0.28 (0.16, 0.50)	
p-value <sup>b</sup>	<0.0001	
<b>Overall survival (OS)<sup>d</sup></b>		
Median in months	Not reached	Not reached
Number (%) of patients with event	7 (13.2)	24 (36.9)
Hazard ratio (95% CI) <sup>c</sup>	0.30 (0.13, 0.70)	

CI: Confidence interval

- <sup>a</sup> Efficacy data with a median follow-up of 25 months (cut-off date 28 Sept 2022).
- <sup>b</sup> One-sided p-value based on stratified log-rank test.
- <sup>c</sup> Based on stratified Cox regression model.
- <sup>d</sup> Not statistically significant since no hypothesis testing was performed for overall survival in the dMMR/MSI-H population.

**Figure 1: Kaplan-Meier curve of progression-free survival per investigator assessment in patients with dMMR/MSI-H EC (RUBY study)**



*GARNET: adult patients with recurrent or advanced dMMR/MSI-H EC who have progressed on or after treatment with a platinum-containing regimen*

The efficacy and safety of dostarlimab monotherapy were investigated in the GARNET study, a multicentre, uncontrolled, multiple parallel cohort, open-label study. The GARNET study included expansion cohorts in subjects with recurrent or advanced solid tumours who have limited available treatment options. Cohort A1 enrolled patients with dMMR/MSI-H EC who have progressed on or after a platinum-containing regimen.

Patients received 500 mg dostarlimab every 3 weeks for 4 cycles followed by 1000 mg dostarlimab every 6 weeks. Treatment continued until unacceptable toxicity or disease progression for up to two years.

The major efficacy outcome measures were objective response rate (ORR) and duration of response (DOR) as assessed by blinded independent central radiologists' (BICR) review according to response evaluation criteria in solid tumours (RECIST) v 1.1. The efficacy population was defined as patients who had measurable disease by BICR at baseline and had minimum of 24 weeks follow-up or had less than 24 weeks of follow-up and discontinued due to adverse events or disease progression.

A total of 143 patients with dMMR/MSI-H EC were evaluated for efficacy in the GARNET study. Among these 143 patients, the baseline characteristics were: median age of 65 years (52 % aged 65 years or older); 77 % white, 3.5 % Asian, 2.8 % black; and ECOG PS 0 (39 %) or 1 (61 %). At the time of diagnosis, 21 % of the patients with dMMR/MSI-H EC were FIGO Stage IV. At study entry (the most recent FIGO stage), 67 % of the patients were FIGO Stage IV. The median number of prior lines of



therapy was one: 63 % of patients had one prior line, 37 % had two or more prior lines. Forty-nine patients (34 %) received treatment only in the neoadjuvant or adjuvant setting before participating in the study.

The identification of dMMR/MSI-H tumour status was prospectively determined based on local testing. Local diagnostic assays (IHC, PCR or NGS) available at the sites were used for the detection of the dMMR/MSI-H expression in tumour material. Most of the sites used IHC as it was the most common assay available.

Table 6 includes the efficacy data for the 143 patients. The overall median treatment duration in weeks was 34 (range 2 to 220). Twenty four percent of subjects who received any amount of dostarlimab received treatment >102 weeks (2 years).

**Table 6: Efficacy results in GARNET for patients with dMMR/MSI-H EC**

<b>Endpoint</b>	<b>Results (N=143)<sup>a</sup></b>
<b>Objective response rate (ORR)</b>	
ORR n (%) (95 % CI)	65 (45.5) (37.1, 54.0)
Complete response rate, n (%)	23 (16.1)
Partial response rate, n (%)	42 (29.4)
<b>Duration of response (DOR)<sup>b</sup></b>	
Median in months	Not reached
Patients with duration $\geq$ 12 months, n (%)	52 (80.0)
Patients with duration $\geq$ 24 months, n (%)	29 (44.6)
<b>Disease control rate (DCR)<sup>c</sup></b>	
DCR n (%) (95 % CI)	86 (60.1) (51.6, 68.2)

CI: Confidence interval

<sup>a</sup> Efficacy data with a median follow-up of 27.6 months (cut-off date 01 Nov 2021)

<sup>b</sup> For patients with a partial or complete response.

<sup>c</sup> Includes patient with complete response, partial response and stable disease for at least 12 weeks.

### Efficacy and PD-L1 status

Clinical activity was observed regardless of tumour PD-L1 combined positive score (CPS) by IHC. The relationship between PD-L1 status and efficacy was analysed post-hoc in patients with available tissue samples (N = 81) among the efficacy population from Cohort A1 of the GARNET study using a data cut-off date of 01 March 2020. Among 23 patients with PD-L1 CPS < 1 %, ORR was 30.4 % (7/23, 95 % CI 13.2, 52.9) and among 58 patients with PD-L1 CPS  $\geq$  1 %, ORR was 55.2 % (32/58, 95 % CI 41.5, 68.3).

### Elderly patients

Of the 108 patients treated with dostarlimab in the GARNET study efficacy population, 50.0 % were older than 65 years.

Consistent results were observed in the elderly population, where the ORR by BICR (95 % CI) was 42.6 % (29.2 %, 56.8 %) in patients  $\geq$  65 years.

### Paediatric population

The European Medicines Agency has deferred the obligation to submit the results of studies with dostarlimab in all subsets of the paediatric population in the treatment of all conditions included in the

category of malignant neoplasms, except haematopoietic and lymphoid tissue (see section 4.2 for information on paediatric use).

## 5.2 Pharmacokinetic properties

The pharmacokinetics (PK) of dostarlimab were assessed as a monotherapy and when administered in combination with carboplatin and paclitaxel.

Dostarlimab monotherapy or in combination with carboplatin and paclitaxel was characterised using population PK analysis from 869 patients with various solid tumours, including 546 patients with EC. When dosed at the recommended therapeutic dose for monotherapy (500 mg administered intravenously every 3 weeks for 4 doses, followed by 1000 mg every 6 weeks), or at the recommended therapeutic dose for combination with carboplatin and paclitaxel (500 mg administered intravenously every 3 weeks for 6 doses, followed by 1000 mg every 6 weeks), dostarlimab shows an approximate two-fold accumulation ( $C_{min}$ ), consistent with the terminal half-life ( $t_{1/2}$ ). The exposure of dostarlimab as monotherapy and/or in combination with carboplatin and paclitaxel was similar.

### Absorption

Dostarlimab is administered via the intravenous route and therefore estimates of absorption are not applicable.

### Distribution

The mean volume of distribution of dostarlimab at steady state is approximately 5.8 L (CV % of 14.9 %).

### Biotransformation

Dostarlimab is a therapeutic mAb IgG4 that is expected to be catabolised into small peptides, amino acids, and small carbohydrates by lysosome through fluid-phase or receptor-mediated endocytosis. The degradation products are eliminated by renal excretion or returned to the nutrient pool without biological effects.

### Elimination

The mean clearance is 0.007 L/h (CV % of 30.2 %) at steady state. The  $t_{1/2}$  at steady state is 23.2 days (CV % of 20.8 %).

Dostarlimab clearance was estimated to be 7.8% lower when dostarlimab was given in combination with carboplatin and paclitaxel. There was no meaningful impact on dostarlimab exposure.

### Linearity/non-linearity

Exposure (both maximum concentration [ $C_{max}$ ] and the area under the concentration-time curve, [ $AUC_{0-tau}$ ] and [ $AUC_{0-inf}$ ]) was approximately dose proportional.

### Pharmacokinetic/pharmacodynamic relationship

Based on exposure efficacy and safety relationships, there are no clinically significant differences in efficacy and safety when doubling the exposure of dostarlimab. Full receptor occupancy as measured by both the direct PD-1 binding and interleukin 2 (IL-2) production functional assay was maintained throughout the dosing interval at the recommended therapeutic dosing regimen.

### Special populations

A population PK analysis of the patient data indicates that there are no clinically important effects of age (range: 24 to 86 years), gender or race, ethnicity, or tumour type on the clearance of dostarlimab.

### Renal impairment

Renal impairment was evaluated based on the estimated creatinine clearance [ $CL_{CR}$  mL/min] (normal:  $CL_{CR} \geq 90$  mL/min, n = 305; mild:  $CL_{CR} = 60-89$  mL/min, n = 397; moderate:  $CL_{CR} = 30-59$  mL/min, n = 164; severe:  $CL_{CR} = 15-29$  mL/min, n = 3 and ESRD:  $CL_{CR} < 15$  mL/min, n = 1). The effect of renal impairment on the clearance of dostarlimab was evaluated by population pharmacokinetic analyses in patients with mild or moderate renal impairment compared to patients with normal renal function. No clinically important differences in the clearance of dostarlimab were found between patients with mild or moderate renal impairment and patients with normal renal function. There are limited data in patients with severe renal impairment.

### Hepatic impairment

Hepatic impairment was evaluated as defined using the US National Cancer Institute criteria of hepatic dysfunction by total bilirubin and AST (Normal: total bilirubin (TB) & AST  $\leq$  upper limit of normal (ULN), n = 772; mild: TB  $>$  ULN to 1.5 ULN or AST  $>$  ULN, n = 92; and moderate: TB  $>$  1.5-3 ULN, any AST, n = 5). The effect of hepatic impairment on the clearance of dostarlimab was evaluated by population pharmacokinetic analyses in patients with mild hepatic impairment compared to patients with normal hepatic function. No clinically important differences in the clearance of dostarlimab were found between patients with mild hepatic impairment and normal hepatic function. There are limited data in patients with moderate hepatic impairment and no data in patients with severe hepatic impairment.

## **5.3 Preclinical safety data**

Nonclinical data reveal no special hazard for humans based on repeat-dose toxicity studies of duration up to 3 months in the cynomolgus monkey. No studies have been performed to assess the potential of dostarlimab for carcinogenicity or genotoxicity. Animal reproduction and development toxicity studies have not been conducted with dostarlimab. Blockade of PD-L1 signaling has been shown in murine models of pregnancy to disrupt tolerance to the foetus and to result in an increase in foetal loss. These results indicate a potential risk that administration of dostarlimab during pregnancy could cause foetal harm, including increased rates of abortion or stillbirth.

No notable effects on the male and female reproductive organs were observed in monkeys in the 1-month and 3-month repeat-dose toxicology studies; however, these results may not be representative at all of the potential clinical risk because of the immaturity of the reproductive system of animals used in the studies. Therefore, fertility toxicity remains unknown.

## **6. PHARMACEUTICAL PARTICULARS**

### **6.1 List of excipients**

Trisodium citrate dihydrate  
Citric acid monohydrate  
L-arginine hydrochloride  
Sodium chloride  
Polysorbate 80  
Water for injection

### **6.2 Incompatibilities**

In the absence of compatibility studies, this medicinal product must not be mixed with other medicinal products.

### **6.3 Shelf life**

#### Unopened vial

3 years.

#### After dilution

If not used immediately, chemical and physical in-use stability has been demonstrated for 24 hours at 2 °C – 8 °C and 6 hours at room temperature (up to 25 °C) from the time of preparation/dilution until the end of administration.

### **6.4 Special precautions for storage**

Store in a refrigerator 2 °C – 8 °C.

Do not freeze.

Store in the original package in order to protect from light.

For storage conditions after dilution of the medicinal product, see section 6.3.

### **6.5 Nature and contents of container**

10 mL type I borosilicate clear glass vial, with a grey chlorobutyl elastomer stopper laminated with fluoropolymer, sealed with an aluminium flip-off cap containing 500 mg dostarlimab.

Each carton contains one vial.

### **6.6 Special precautions for disposal and other handling**

#### Preparation/dilution

Parenteral medicinal products should be inspected visually for particulate matter and discolouration prior to administration. JEMPERLI is a slightly opalescent colourless to yellow solution. Discard the vial if visible particles are observed.

JEMPERLI is compatible with an IV bag made of polyvinyl chloride (PVC) with or without di(2-ethylhexyl) phthalate (DEHP), ethylene vinyl acetate, polyethylene (PE), polypropylene (PP) or polyolefin blend (PP+PE), and a syringe made from PP.

For the 500 mg dose, withdraw 10 mL of JEMPERLI from a vial and transfer into an intravenous bag containing sodium chloride 9 mg/mL (0.9 %) solution for injection, or glucose 50 mg/mL (5 %) solution for injection. The final concentration of the diluted solution should be between 2 mg/mL and 10 mg/mL. The total volume of the infusion solution must not exceed 250 mL. This may require withdrawing a volume of diluent from the intravenous bag prior to adding a volume of JEMPERLI into the IV bag.

- For example, if preparing a 500 mg dose in a 250 mL diluent intravenous bag, to achieve a 2 mg/mL concentration would require withdrawing 10 mL of diluent from the 250 mL intravenous bag. Then, 10 mL of JEMPERLI would be withdrawn from the vial and transferred into the intravenous bag.

For the 1000 mg dose, withdraw 10 mL of JEMPERLI from each of two vials (withdraw 20 mL total) and transfer into an intravenous bag containing sodium chloride 9 mg/mL (0.9 %) solution for injection, or glucose 50 mg/mL (5 %) solution for injection. The final concentration of the diluted solution should be between 4 mg/mL and 10 mg/mL. The total volume of the infusion solution must not exceed 250 mL. This may require withdrawing a volume of diluent from the IV bag prior to adding a volume of JEMPERLI into the intravenous bag.

- For example, if preparing a 1000 mg dose in a 250 mL diluent intravenous bag, to achieve a 4 mg/mL concentration would require withdrawing 20 mL of diluent from the 250 mL intravenous bag. Then, 10 mL of JEMPERLI would be withdrawn from each of two vials, totaling 20 mL, and transferred into the intravenous bag.

Mix diluted solution by gentle inversion. Do not shake the final infusion bag. Discard any unused portion left in the vial.

#### Storage

Store in the original carton until time of preparation in order to protect from light. The prepared dose may be stored either:

- At room temperature up to 25 °C for no more than 6 hours from the time of dilution until the end of infusion.
- Under refrigeration at 2 °C to 8 °C for no more than 24 hours from time of dilution until end of infusion. If refrigerated, allow the diluted solution to come to room temperature prior to administration.

#### Administration

JEMPERLI should be administered by intravenous infusion using an intravenous infusion pump over 30 minutes by a health care practitioner. Tubing should be made of PVC, platinum cured silicon or PP; fittings made from PVC or polycarbonate and needles made from stainless steel. A 0.2 or 0.22 micron in-line polyethersulfone (PES) filter must be used during administration of JEMPERLI.

JEMPERLI must not be administered as an intravenous push or bolus injection.

Do not co-administer other medicinal products through the same infusion line.

Any unused medicinal product or waste material should be disposed of in accordance with local requirements.

## **7. MARKETING AUTHORISATION HOLDER**

GlaxoSmithKline (Ireland) Limited  
12 Riverwalk  
Citywest Business Campus  
Dublin 24  
Ireland

## **8. MARKETING AUTHORISATION NUMBER(S)**

EU/1/21/1538/001

## **9. DATE OF FIRST AUTHORISATION/RENEWAL OF THE AUTHORISATION**

Date of first authorisation: 21 April 2021

Date of latest renewal: 15 February 2023

#### **10. DATE OF REVISION OF THE TEXT**

Detailed information on this medicinal product is available on the website of the European Medicines Agency <http://www.ema.europa.eu>

## **ANNEX II**

- A. MANUFACTURER OF THE BIOLOGICAL ACTIVE  
SUBSTANCE AND MANUFACTURER RESPONSIBLE FOR  
BATCH RELEASE**
- B. CONDITIONS OR RESTRICTIONS REGARDING SUPPLY  
AND USE**
- C. OTHER CONDITIONS AND REQUIREMENTS OF THE  
MARKETING AUTHORISATION**
- D. CONDITIONS OR RESTRICTIONS WITH REGARD TO THE  
SAFE AND EFFECTIVE USE OF THE MEDICINAL PRODUCT**

**A. MANUFACTURER OF THE BIOLOGICAL ACTIVE SUBSTANCE AND  
MANUFACTURER RESPONSIBLE FOR BATCH RELEASE**

Name and address of the manufacturer of the biological active substance

WuXi Biologics Co., Ltd.,  
108 Meiliang Road,  
Mashan, Binhu District, WuXi,  
Jiangsu, 214092,  
China

Name and address of the manufacturer responsible for batch release

GlaxoSmithKline Trading Services Ltd.  
12 Riverwalk  
Citywest Business Campus  
Dublin 24  
Ireland

**B. CONDITIONS OR RESTRICTIONS REGARDING SUPPLY AND USE**

Medicinal product subject to restricted medical prescription (see Annex I: Summary of Product Characteristics, section 4.2).

**C. OTHER CONDITIONS AND REQUIREMENTS OF THE MARKETING  
AUTHORISATION**

- **Periodic safety update reports (PSURs)**

The requirements for submission of PSURs for this medicinal product are set out in the list of Union reference dates (EURD list) provided for under Article 107c(7) of Directive 2001/83/EC and any subsequent updates published on the European medicines web-portal.

**D. CONDITIONS OR RESTRICTIONS WITH REGARD TO THE SAFE AND EFFECTIVE  
USE OF THE MEDICINAL PRODUCT**

- **Risk management plan (RMP)**

The MAH shall perform the required pharmacovigilance activities and interventions detailed in the agreed RMP presented in Module 1.8.2 of the marketing authorisation and any agreed subsequent updates of the RMP.

An updated RMP should be submitted:

- At the request of the European Medicines Agency;
- Whenever the risk management system is modified, especially as the result of new information being received that may lead to a significant change to the benefit/risk profile or as the result of an important (pharmacovigilance or risk minimisation) milestone being reached.

- **Additional risk minimisation measures**



Prior to the launch of JEMPERLI (dostarlimab) in each Member State, the Marketing Authorisation Holder (MAH) must agree about the content and format of the educational programme with the National Competent Authority.

The educational programme is aimed at increasing the awareness of patients about the signs and symptoms of potential immune-related adverse reactions associated with dostarlimab treatment.

The MAH shall ensure that in each Member State where JEMPERLI is marketed, all healthcare professionals who are expected to prescribe JEMPERLI are provided with the following educational package:

- Patient Card.

The **Patient Card** shall contain the following key messages:

- Description of the main signs and symptoms of immune-related adverse reactions.
  - The importance of notifying their treating physician/nurse immediately if symptoms occur or worsen, and the importance of not attempting to treat themselves.
  - The importance of carrying the Patient Card at all times and to show it at all medical visits to healthcare professionals other than the prescriber (e.g. emergency healthcare professionals).
  - Includes contact details of their JEMPERLI prescriber and a warning message for healthcare professionals at any time, including in conditions of emergency, that the patient is using JEMPERLI.
- **Obligation to conduct post-authorisation measures**

The MAH shall complete, within the stated timeframe, the below measures:

<b>Description</b>	<b>Due date</b>
Post-authorisation efficacy study (PAES): in order to further characterise the efficacy of dostarlimab in combination with carboplatin and paclitaxel for the treatment of adult patients with mismatch repair deficient / microsatellite instability-high primary advanced or recurrent endometrial cancer and who are candidates for systemic therapy, the MAH should submit the results of the final OS analysis of RUBY part 1 – Final Study Report Submission:	30 June 2029

**ANNEX III**  
**LABELLING AND PACKAGE LEAFLET**

## **A. LABELLING**

**PARTICULARS TO APPEAR ON THE OUTER PACKAGING**

**CARTON**

**1. NAME OF THE MEDICINAL PRODUCT**

JEMPERLI 500 mg concentrate for solution for infusion  
dostarlimab

**2. STATEMENT OF ACTIVE SUBSTANCE(S)**

One vial of 10 mL sterile concentrate contains 500 mg of dostarlimab.  
Each mL of sterile concentrate contains 50 mg of dostarlimab.

**3. LIST OF EXCIPIENTS**

Excipients: trisodium citrate dihydrate; citric acid monohydrate; L-arginine hydrochloride; sodium chloride; polysorbate 80; water for injection.  
See leaflet for further information.

**4. PHARMACEUTICAL FORM AND CONTENTS**

Concentrate for solution for infusion  
1 vial of 10 mL (500 mg)

**5. METHOD AND ROUTE(S) OF ADMINISTRATION**

Read the package leaflet before use.  
Intravenous use.  
For single use only.

**6. SPECIAL WARNING THAT THE MEDICINAL PRODUCT MUST BE STORED OUT OF THE SIGHT AND REACH OF CHILDREN**

Keep out of the sight and reach of children.

**7. OTHER SPECIAL WARNING, IF NECESSARY**

**8. EXPIRY DATE**

EXP  
Read the leaflet for the shelf life of the reconstituted medicine.

**9. SPECIAL STORAGE CONDITIONS**

Store in a refrigerator.  
Do not freeze.  
Store in the original package in order to protect from light.

**10. SPECIAL PRECAUTIONS FOR DISPOSAL OF UNUSED MEDICINAL PRODUCTS OR WASTE MATERIALS DERIVED FROM SUCH MEDICINAL PRODUCTS, IF APPROPRIATE**

**11. NAME AND ADDRESS OF THE MARKETING AUTHORISATION HOLDER**

GlaxoSmithKline (Ireland) Limited  
Dublin 24  
Ireland

**12. MARKETING AUTHORISATION NUMBER(S)**

EU/1/21/1538/001

**13. BATCH NUMBER**

Lot

**14. GENERAL CLASSIFICATION FOR SUPPLY**

**15. INSTRUCTIONS ON USE**

**16. INFORMATION IN BRAILLE**

Justification for not including Braille accepted.

**17. UNIQUE IDENTIFIER – 2D BARCODE**

2D barcode carrying the unique identifier included.

**18. UNIQUE IDENTIFIER - HUMAN READABLE DATA**

PC  
SN  
NN

**MINIMUM PARTICULARS TO APPEAR ON SMALL IMMEDIATE PACKAGING UNITS**

**VIAL LABEL**

**1. NAME OF THE MEDICINAL PRODUCT AND ROUTE(S) OF ADMINISTRATION**

JEMPERLI 500 mg sterile concentrate  
dostarlimab  
IV

**2. METHOD OF ADMINISTRATION**

**3. EXPIRY DATE**

EXP

**4. BATCH NUMBER**

Lot

**5. CONTENTS BY WEIGHT, BY VOLUME OR BY UNIT**

10 mL (500 mg)

**6. OTHER**

**B. PACKAGE LEAFLET**

## Package leaflet: Information for the patient

### JEMPERLI 500 mg concentrate for solution for infusion dostarlimab

▼ This medicine is subject to additional monitoring. This will allow quick identification of new safety information. You can help by reporting any side effects you may get. See the end of section 4 for how to report side effects.

**Read all of this leaflet carefully before you start taking this medicine because it contains important information for you.**

- Keep this leaflet. You may need to read it again.
- Your doctor will provide you with a Patient Card. Be sure to keep this Card with you while undergoing treatment with JEMPERLI.
- If you have any further questions, ask your doctor or nurse.
- If you get any side effects, talk to your doctor or nurse. This includes any possible side effects not listed in this leaflet. See section 4.

#### What is in this leaflet

1. What JEMPERLI is and what it is used for
2. What you need to know before you are given JEMPERLI
3. How JEMPERLI is given
4. Possible side effects
5. How to store JEMPERLI
6. Contents of the pack and other information

#### 1. What JEMPERLI is and what it is used for

JEMPERLI contains the active substance dostarlimab, which is a *monoclonal antibody*, a type of protein designed to recognise and attach to a specific target substance in the body.

JEMPERLI works by helping your immune system fight your cancer.

JEMPERLI is used in adults to treat a kind of cancer called *endometrial cancer* (cancer of the lining of the womb). It is given when cancer has spread, or cannot be taken out by surgery, and has progressed on or following prior treatment.

JEMPERLI may be given in combination with other anticancer medicines. It is important that you also read the package leaflets for the other anticancer medicines you may be receiving. If you have any questions about these medicines, ask your doctor.

#### 2. What you need to know before you are given JEMPERLI

##### You should not be given JEMPERLI:

- if you are allergic to dostarlimab or any of the other ingredients of this medicine (listed in section 6).

##### Warnings and precautions

Talk to your doctor or nurse before you are given JEMPERLI if you have:

- immune system problems;
- lung or breathing problems;



- liver or kidney problems;
- serious rash;
- any other medical problems.

### Symptoms you need to look out for

JEMPERLI can have serious side effects, which can sometimes become life-threatening and can lead to death. These side effects may happen at any time during treatment, or even after your treatment has ended. You may get more than one side effect at the same time.

You need to be aware of possible symptoms, so your doctor can give you treatment for side effects if necessary.

➔ **Read the information** under ‘Symptoms of serious side effects’ in section 4. Talk to your doctor or nurse if you have any questions or worries.

### Children and adolescents

JEMPERLI should not be used in children and adolescents below 18 years of age.

### Other medicines and JEMPERLI

**Tell your doctor or nurse** if you are taking, have recently taken or might take any other medicines.

Some medicines may interfere with the effect of JEMPERLI:

- medicines that make your immune system weak — for example, *corticosteroids*, such as prednisone.

➔ **Tell your doctor** if you are taking any of these.

However, once you are treated with JEMPERLI, your doctor may give you corticosteroids to reduce any side effects that you may have.

### Pregnancy

- **You must not be given JEMPERLI if you are pregnant** unless your doctor specifically recommends it.
- If you are pregnant, think you may be pregnant or are planning to have a baby, ask your doctor for advice before you are given this medicine.
- JEMPERLI can cause harmful effects or death to your unborn baby.
- If you are a woman who could become pregnant, you must use effective **contraception** while you are being treated with JEMPERLI and for at least 4 months after your last dose.

### Breast-feeding

- If you are breast-feeding, **ask your doctor** for advice before you are given this medicine.
- **You must not breast-feed** during treatment and for at least 4 months after your last dose of JEMPERLI.
- It is not known if the active ingredient of JEMPERLI passes into your breast milk.

### Driving and using machines

JEMPERLI is unlikely to affect your ability to drive and use machines. However, if you have side effects that affect your ability to concentrate and react, you should be careful when driving or operating machines.

### JEMPERLI contains sodium

This medicine contains less than 1 mmol sodium (23 mg) per dosage unit, that is to say essentially ‘sodium-free.’ However, before JEMPERLI is given to you, it is mixed with a solution that may contain sodium. Talk to your doctor if you are on a low salt diet.

### 3. How JEMPERLI is given

JEMPERLI will be given to you in a hospital or clinic under the supervision of a doctor experienced in cancer treatment.

When JEMPERLI is given on its own, the recommended dose of JEMPERLI is 500 mg every 3 weeks for 4 doses, followed by 1000 mg every 6 weeks for all doses thereafter.

When JEMPERLI is given in combination with carboplatin and paclitaxel, the recommended dose of JEMPERLI is 500 mg every 3 weeks for 6 doses, followed by 1000 mg every 6 weeks for all doses thereafter.

Your doctor will give you JEMPERLI as a drip into a vein (*intravenous infusion*) for about 30 minutes.

Your doctor will decide how many treatments you need.

#### If you forget an appointment to receive JEMPERLI

➔ **Contact your doctor or hospital immediately** to reschedule your appointment.

**It is very important** that you do not miss a dose of this medicine.

#### If you stop receiving JEMPERLI

Stopping your treatment may stop the effect of the medicine. Do not stop treatment with JEMPERLI unless you have discussed this with your doctor.

#### Patient Card

Important information from this Package Leaflet can be found in the Patient Card you have been given by your doctor. It is important that you keep this Patient Card and show it to your partner or caregivers.

If you have any further questions on the use of this medicine, ask your doctor or nurse.

### 4. Possible side effects

Like all medicines, this medicine can cause side effects, although not everybody gets them.

Some of the side effects can be serious, and you need to know what symptoms to look out for.

#### Symptoms of serious side effects

JEMPERLI can cause serious side effects. If you develop symptoms **you must tell your doctor or nurse as soon as possible**. Your doctor may give you other medicines to prevent more serious complications and reduce your symptoms. Your doctor may decide that you should miss a dose of JEMPERLI, or stop your treatment altogether.

Conditions	Possible symptoms
Inflammation of lungs ( <i>pneumonitis</i> )	<ul style="list-style-type: none"><li>• shortness of breath</li><li>• chest pain</li><li>• new or worse cough</li></ul>
Inflammation of intestines ( <i>colitis, enteritis, vasculitis gastrointestinal</i> )	<ul style="list-style-type: none"><li>• diarrhoea, or more bowel movements than usual</li><li>• black, tarry, sticky stools; blood or mucus in stools</li><li>• severe stomach pain or tenderness</li><li>• feeling sick (<i>nausea</i>), being sick (<i>vomiting</i>)</li></ul>

<b>Conditions</b>	<b>Possible symptoms</b>
Inflammation of food pipe and stomach ( <i>oesophagitis, gastritis</i> )	<ul style="list-style-type: none"> <li>• trouble swallowing</li> <li>• decreased appetite</li> <li>• burning in the chest (heartburn)</li> <li>• chest or upper belly pain</li> <li>• feeling sick (<i>nausea</i>), being sick (<i>vomiting</i>)</li> </ul>
Inflammation of liver ( <i>hepatitis</i> )	<ul style="list-style-type: none"> <li>• feeling sick (<i>nausea</i>), being sick (<i>vomiting</i>)</li> <li>• loss of appetite</li> <li>• pain on the right side of the abdomen (stomach)</li> <li>• yellowing of the skin or the whites of the eyes</li> <li>• dark-coloured urine</li> <li>• bleeding or bruising more easily than normal</li> </ul>
Inflammation of hormone glands ( <i>especially thyroid, pituitary, adrenal, pancreas</i> )	<ul style="list-style-type: none"> <li>• rapid heartbeat</li> <li>• weight loss or weight gain</li> <li>• increased sweating</li> <li>• hair loss</li> <li>• feeling cold</li> <li>• constipation</li> <li>• abdominal pain</li> <li>• deeper voice</li> <li>• muscle aches</li> <li>• dizziness or fainting</li> <li>• headache that will not go away or unusual headache</li> </ul>
Type 1 diabetes, including diabetic ketoacidosis (acid in the blood produced from diabetes)	<ul style="list-style-type: none"> <li>• feeling more hungry or thirsty than usual</li> <li>• needing to urinate more often including at night</li> <li>• weight loss</li> <li>• feeling sick (<i>nausea</i>), being sick (<i>vomiting</i>)</li> <li>• stomach pain</li> <li>• feeling tired</li> <li>• unusual sleepiness</li> <li>• having difficulty thinking clearly</li> <li>• breath that smells sweet or fruity</li> <li>• deep or fast breathing</li> </ul>
Inflammation of kidneys ( <i>nephritis</i> )	<ul style="list-style-type: none"> <li>• changes in amount or colour of urine</li> <li>• swelling of the ankles</li> <li>• loss of appetite</li> <li>• blood in the urine</li> </ul>
Inflammation of skin	<ul style="list-style-type: none"> <li>• rash, itching, dry skin, peeling or skin sores</li> <li>• ulcers in the mouth, nose, throat or genital area</li> </ul>
Inflammation of heart muscle ( <i>myocarditis</i> )	<ul style="list-style-type: none"> <li>• trouble breathing</li> <li>• dizziness or fainting</li> <li>• fever</li> <li>• chest pain and chest tightness</li> <li>• flu like symptoms</li> </ul>
Inflammation of brain and nervous system ( <i>myasthenic syndrome/myasthenia gravis, Guillain-Barré syndrome, encephalitis</i> )	<ul style="list-style-type: none"> <li>• neck stiffness</li> <li>• headache</li> <li>• fever, chills</li> <li>• vomiting</li> <li>• eye sensitivity to light</li> <li>• weakness of eye muscles, drooping eyelids</li> <li>• dry eyes and blurred vision</li> </ul>

Conditions	Possible symptoms
	<ul style="list-style-type: none"> <li>• difficulty swallowing, dry mouth</li> <li>• impaired speech</li> <li>• confusion and sleepiness</li> <li>• dizziness</li> <li>• pricking or pins and needles sensations in the hands and feet</li> <li>• aching muscles</li> <li>• difficulty walking or lifting objects</li> <li>• abnormal heart beat/rate or blood pressure</li> </ul>
Inflammation of spinal cord ( <i>myelitis</i> )	<ul style="list-style-type: none"> <li>• pain</li> <li>• numbness</li> <li>• tingling, or weakness in the arms or legs</li> <li>• bladder or bowel problems including needing to urinate more frequently, urinary incontinence, difficulty urinating and constipation</li> </ul>
Inflammation of eyes	<ul style="list-style-type: none"> <li>• changes in eyesight</li> </ul>
Inflammation of other organs	<ul style="list-style-type: none"> <li>• severe or persistent muscle or joint pains</li> <li>• severe muscle weakness</li> <li>• swollen or cold hands or feet</li> <li>• feeling tired</li> </ul>

### Infusion-related reactions

Some people may have allergic-like reactions when they receive an infusion. These usually develop within minutes or hours but may develop up to 24 hours after treatment.

Symptoms include:

- shortness of breath or wheezing;
- itching or rash;
- flushing;
- dizziness;
- chills or shaking;
- fever;
- drop in blood pressure (feeling like passing out).

**Solid organ transplant rejection and other complications, including graft-versus-host disease (GvHD), in people who have received a bone marrow (stem cell) transplant that uses donor stem cells (allogeneic).** These complications can be serious and can lead to death. These complications may happen if you underwent transplantation either before or after being treated with JEMPERLI. Your healthcare provider will monitor you for these complications.

➔ **Seek medical attention immediately** if you think you may be having a reaction.

The following side effects have been reported with JEMPERLI alone.

**Very common side effects** - (may affect **more than 1 in 10** people):

- decrease in the number of red blood cells (*anaemia*);
- reduced thyroid gland activity;
- diarrhoea; feeling sick (*nausea*); being sick (*vomiting*);
- skin redness or rash; blistering of the skin or mucous membranes; itchy skin;
- joint pain;
- high temperature; fever;
- increased liver enzyme levels in the blood.

➔ **Check the table** above for symptoms of possible serious side effects.

**Common side effects** - (may affect **up to 1 in 10** people):

- overactive thyroid gland;
- decreased secretion of adrenal hormones (*adrenal insufficiency*);
- inflammation of the lung;
- inflammation of the lining of the bowel (*colon*);
- inflammation of the pancreas;
- inflammation of the stomach;
- inflammation of the liver;
- muscle pain;
- chills;
- reaction to the infusion;
- hypersensitivity reaction to the infusion.

➔ **Check the table** above for symptoms of possible serious side effects.

**Uncommon side effects** - (may affect **up to 1 in 100** people):

- inflammation of the brain;
- destruction of red blood cells (*Autoimmune haemolytic anaemia*);
- inflammation of the pituitary gland, in the base of the brain;
- inflammation of the thyroid gland;
- Type 1 diabetes or diabetic complications (*diabetic ketoacidosis*);
- inflammation of the food pipe;
- a condition in which the muscles become weak and there is a rapid fatigue of the muscles (*myasthenia gravis*);
- inflammation of the joints;
- inflammation of the muscles;
- inflammation of the eye — the iris (the coloured part of the eye) and the ciliary body (area around the iris);
- inflammation of the kidneys.

➔ **Check the table** above for symptoms of possible serious side effects.

The following side effects have been reported with JEMPERLI when given in combination with carboplatin and paclitaxel.

**Very common side effects** - (may affect **more than 1 in 10** people):

- underactive thyroid gland
- skin rash
- dry skin
- high temperature; fever
- increased liver enzyme levels in the blood.

➔ **Check the table** above for symptoms of possible serious side effects.

**Common side effects** - (may affect **up to 1 in 10** people):

- overactive thyroid gland
- decreased secretion of adrenal hormones (*adrenal insufficiency*)
- inflammation of the lung
- inflammation of the lining of the bowel (*colon*).

➔ **Check the table** above for symptoms of possible serious side effects.

**Uncommon side effects** - (may affect **up to 1 in 100** people):

- inflammation of the thyroid gland

- Type 1 diabetes
  - a condition in which the muscles become weak and there is a rapid fatigue of the muscles (*myasthenic syndrome*)
  - inflammation of the heart muscle
  - inflammation of the pancreas
  - inflammation of the stomach
  - inflammation of the blood vessels in the food pipe, stomach or bowel
  - inflammation of the eye
  - inflammation of the joints
  - inflammation of the muscles
  - inflammation throughout the body.
- ➔ **Check the table** above for symptoms of possible serious side effects.

➔ **Contact your doctor or nurse as soon as possible** if you develop any of these symptoms.

### **Reporting of side effects**

If you get any side effects, talk to your doctor or nurse. This includes any possible side effects not listed in this leaflet. You can also report side effects directly via the national reporting system listed in [Appendix V](#). By reporting side effects you can help provide more information on the safety of this medicine.

## **5. How to store JEMPERLI**

JEMPERLI will be given to you in a hospital or clinic and the healthcare professionals will be responsible for its storage.

Keep this medicine out of the sight and reach of children.

Do not use this medicine after the expiry date which is stated on the carton and vial label after EXP. The expiry date refers to the last day of that month.

Store in a refrigerator (2 °C – 8 °C). Do not freeze. Store in the original package in order to protect from light.

If not used immediately, the prepared infusion may be stored for up to 24 hours at 2 °C to 8 °C or 6 hours at room temperature (up to 25 °C) from the time of preparation/dilution until the end of administration.

Do not use if this medicine contains visible particles.

Do not store any unused medicine for reuse. Any unused medicine or waste material should be disposed of in accordance with local requirements. These measures will help protect the environment.

## **6. Contents of the pack and other information**

### **What JEMPERLI contains**

- The active substance is dostarlimab.
- One vial of 10 mL concentrate for solution for infusion (sterile concentrate) contains 500 mg of dostarlimab.
- Each mL of concentrate for solution for infusion contains 50 mg of dostarlimab.

- The other ingredients are trisodium citrate dihydrate; citric acid monohydrate; L-arginine hydrochloride; sodium chloride; polysorbate 80; and water for injection (see section 2).

### **What JEMPERLI looks like and contents of the pack**

JEMPERLI is a clear to slightly opalescent colourless to yellow solution, essentially free from visible particles.

It is available in cartons containing one glass vial.

### **Marketing Authorisation Holder**

GlaxoSmithKline (Ireland) Limited  
12 Riverwalk  
Citywest Business Campus  
Dublin 24  
Ireland

### **Manufacturer**

GlaxoSmithKline Trading Services Ltd.  
12 Riverwalk  
Citywest Business Campus  
Dublin 24  
Ireland

For any information about this medicine, please contact the local representative of the Marketing Authorisation Holder:

### **België/Belgique/Belgien**

GlaxoSmithKline Pharmaceuticals s.a./n.v.  
Tél/Tel: + 32 (0) 10 85 52 00

### **Lietuva**

GlaxoSmithKline (Ireland) Limited  
Tel: + 370 80000334

### **България**

GlaxoSmithKline (Ireland) Limited  
Тел.: + 359 80018205

### **Luxembourg/Luxemburg**

GlaxoSmithKline Pharmaceuticals s.a./n.v.  
Belgique/Belgien  
Tél/Tel: + 32 (0) 10 85 52 00

### **Česká republika**

GlaxoSmithKline, s.r.o.  
Tel: + 420 222 001 111  
cz.info@gsk.com

### **Magyarország**

GlaxoSmithKline (Ireland) Limited  
Tel.: + 36 80088309

### **Danmark**

GlaxoSmithKline Pharma A/S  
Tlf: + 45 36 35 91 00  
dk-info@gsk.com

### **Malta**

GlaxoSmithKline (Ireland) Limited  
Tel: + 356 80065004

### **Deutschland**

GlaxoSmithKline GmbH & Co. KG  
Tel.: + 49 (0)89 36044 8701  
produkt.info@gsk.com

### **Nederland**

GlaxoSmithKline BV  
Tel: + 31 (0) 33 2081100

### **Eesti**

### **Norge**

GlaxoSmithKline (Ireland) Limited  
Tel: + 372 8002640

GlaxoSmithKline AS  
Tlf: + 47 22 70 20 00

**Ελλάδα**

GlaxoSmithKline Μονοπρόσωπη Α.Ε.Β.Ε.  
Τηλ: + 30 210 68 82 100

**Österreich**

GlaxoSmithKline Pharma GmbH  
Tel: + 43 (0)1 97075 0  
at.info@gsk.com

**España**

GlaxoSmithKline, S.A.  
Tel: + 34 900 202 700  
es-ci@gsk.com

**Polska**

GSK Services Sp. z o.o.  
Tel.: + 48 (0)22 576 9000

**France**

Laboratoire GlaxoSmithKline  
Tél: + 33 (0)1 39 17 84 44  
diam@gsk.com

**Portugal**

GlaxoSmithKline – Produtos Farmacêuticos, Lda.  
Tel: + 351 21 412 95 00  
FI.PT@gsk.com

**Hrvatska**

GlaxoSmithKline (Ireland) Limited  
Tel: +385 800787089

**România**

GlaxoSmithKline (Ireland) Limited  
Tel: + 40 800672524

**Ireland**

GlaxoSmithKline (Ireland) Limited  
Tel: + 353 (0)1 4955000

**Slovenija**

GlaxoSmithKline (Ireland) Limited  
Tel: + 386 80688869

**Ísland**

Vistor hf.  
Sími: + 354 535 7000

**Slovenská republika**

GlaxoSmithKline (Ireland) Limited  
Tel: + 421 800500589

**Italia**

GlaxoSmithKline S.p.A.  
Tel: + 39 (0)45 7741111

**Suomi/Finland**

GlaxoSmithKline Oy  
Puh/Tel: + 358 (0)10 30 30 30

**Κύπρος**

GlaxoSmithKline (Ireland) Limited  
Τηλ: + 357 80070017

**Sverige**

GlaxoSmithKline AB  
Tel: + 46 (0)8 638 93 00  
info.produkt@gsk.com

**Latvija**

GlaxoSmithKline (Ireland) Limited  
Tel: + 371 80205045

**United Kingdom (Northern Ireland)**

GlaxoSmithKline (Ireland) Limited  
Tel: + 44 (0)800 221441  
customercontactuk@gsk.com

**This leaflet was last revised in**

**Other sources of information**

Detailed information on this medicine is available on the European Medicines Agency web site:  
<http://www.ema.europa.eu>.



---

**The following information is intended for healthcare professionals only:**

Preparation/dilution, storage and administration of the solution for infusion:

- Parenteral medicinal products should be inspected visually for particulate matter and discolouration prior to administration. JEMPERLI is a slightly opalescent colourless to yellow solution. Discard the vial if visible particles are observed.
- JEMPERLI is compatible with an IV bag made of polyvinyl chloride (PVC) with or without di(2-ethylhexyl) phthalate (DEHP), ethylene vinyl acetate, polyethylene (PE), polypropylene (PP) or polyolefin blend (PP+PE), and a syringe made from PP.
- For the 500 mg dose, withdraw 10 mL of JEMPERLI from a vial and transfer into an intravenous bag containing sodium chloride 9 mg/mL (0.9 %) solution for injection or glucose 50 mg/mL (5 %) solution for injection. The final concentration of the diluted solution should be between 2 mg/mL and 10 mg/mL. The total volume of the infusion solution must not exceed 250 mL. This may require withdrawing a volume of diluent from the IV bag prior to adding a volume of JEMPERLI into the IV bag.
  - For example, if preparing a 500 mg dose in a 250 mL diluent IV bag, to achieve a 2 mg/mL concentration would require withdrawing 10 mL of diluent from the 250 mL IV bag. Then, 10 mL of JEMPERLI would be withdrawn from the vial and transferred into the IV bag.
- For the 1000 mg dose, withdraw 10 mL of JEMPERLI from each of two vials (withdraw 20 mL total) and transfer into an intravenous bag containing sodium chloride 9 mg/mL (0.9 %) solution for injection or glucose 50 mg/mL (5 %) solution for injection. The final concentration of the diluted solution should be between 4 mg/mL and 10 mg/mL. The total volume of the infusion solution must not exceed 250 mL. This may require withdrawing a volume of diluent from the IV bag prior to adding a volume of JEMPERLI into the IV bag.
  - For example, if preparing a 1000 mg dose in a 250 mL diluent IV bag, to achieve a 4 mg/mL concentration would require withdrawing 20 mL of diluent from the 250 mL IV bag. Then, 10 mL of JEMPERLI would be withdrawn from each of two vials, totaling 20 mL, and transferred into the IV bag.
- Mix diluted solution by gentle inversion. Do not shake the final infusion bag. Discard any unused portion left in the vial.
- Store in the original carton until time of preparation in order to protect from light. The prepared dose may be stored either:
  - At room temperature up to 25 °C for no more than 6 hours from the time of dilution until the end of infusion.
  - Under refrigeration at 2 °C – 8 °C for no more than 24 hours from time of dilution until end of infusion. If refrigerated, allow the diluted solution to come to room temperature prior to administration.
- JEMPERLI should be administered by intravenous infusion using an intravenous infusion pump over 30 minutes by a health care practitioner.
- Tubing should be made of PVC, platinum cured silicon or PP; fittings made from PVC or polycarbonate and needles made from stainless steel.
- A 0.2 or 0.22 micron in-line polyethersulfone (PES) filter must be used during administration of JEMPERLI.
- JEMPERLI must not be administered as an intravenous push or bolus injection.
- Do not co-administer other medicinal products through the same infusion line.

Any unused medicinal product or waste material should be disposed of in accordance with local requirements.