



EUROPEAN MEDICINES AGENCY  
SCIENCE MEDICINES HEALTH

## EU Big Data Stakeholder Forum 2023

---

04 December 2023

Session 2: Enabling the use and establishing the value of Real-World Evidence –  
EHDS2 Pilot first insights

Presented by Denise Umuhire  
European Medicines Agency, Data Analytics and Methods Taskforce



An agency of the European Union



# Outline

- EHDS – what is it and what's its aim?
- HealthData@EU pilot
- Preliminary insights and learnings



# European Health Data Space - User perspectives

## MyHealth@EU

Empower citizens to have control over their health data



Better diagnosis and treatment, improved patient safety, continuity of care and improved healthcare efficiency

Enable healthcare professionals to have access to relevant health data



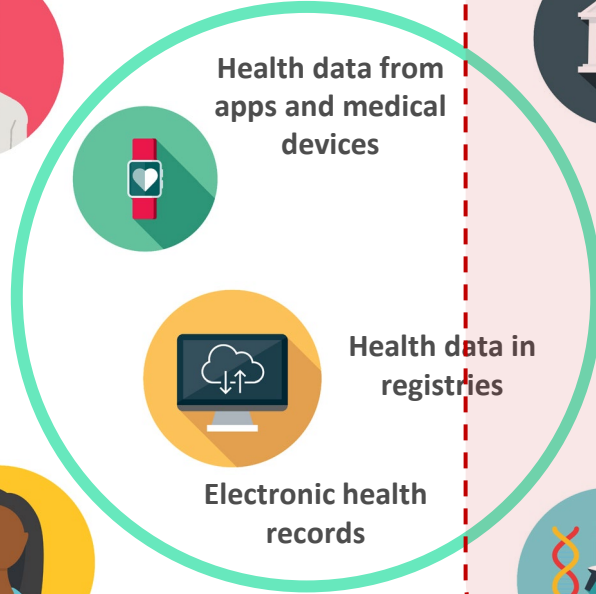
Health data from apps and medical devices



Health data in registries



Electronic health records

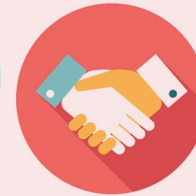


## HealthData@EU pilot

Assist policy makers and regulators in accessing relevant health data



Facilitate access to health data for innovators in industry



Grant access to health data for researchers

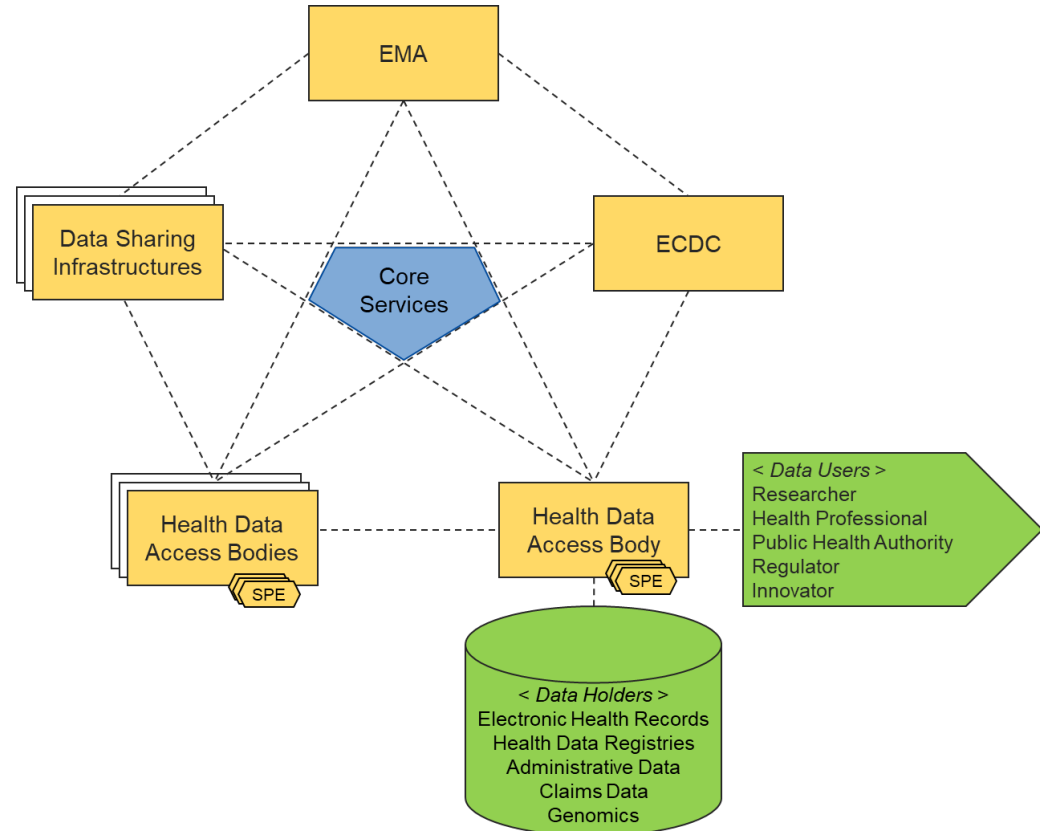
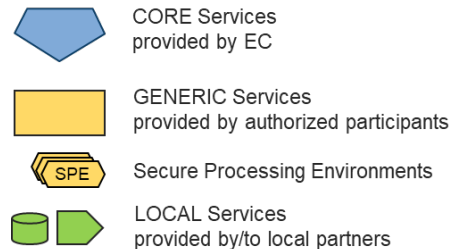


Better health policy, greater opportunities for research and innovation

Slide extracted from the EHDS Pilot GA Oct 2023, Courtesy of M. Berneaux, EC Policy Officer.

# HealthData@EU – a vision

- **New infrastructure for secondary uses of health data**
- Connecting health data access bodies and data sharing infrastructures
- Several health data access bodies are established, or in the process, across Member States





A 2-year pilot kicked off in Oct 22 - **Five use cases** to inform design, development, and deployment of HealthData@EU frameworks (**secondary use of data**)

1 


Antimicrobial resistance surveillance


led by 





2 

Identifying the risks of coagulation disorders in patients with Covid-19


led by 


 EUROPEAN MEDICINES AGENCY  
SCIENCE MEDICINES HEALTH



3 

Test use, hospitalizations and vaccination adherence in vulnerable sub-populations

led by 




4 


Project to anticipate care pathways in cardio-metabolic diseases using AI


led by 




5 

Identify genomic signatures characteristic of different types of colorectal cancers

led by 





**Recommendations on common data models and standards terminologies**

**Design and deploy an IT infrastructure federated by central services**

*including eDelivery implementation and evaluation, provision of discovery services like SML and SMP and reuse of CEF & DEP building blocks.*

**Develop and deploy a Health-DCAT AP extension**

*a standardized descriptive metadata template for health data portals respecting the FAIR principles and user needs.*

**Recommendations for an EHDS node**

*Including an overall economic model.*

**Define a Common Data Application Form**

*study and assess regulatory and ethical differences for the provisions of access to health data. Establish guideline to build user journey.*

**Demonstrate the added value of cross-country health data reuse on specific use cases**

# One of the DARWIN EU® ongoing studies HMA Heads of Medicines Agencies



Testing DARWIN EU® as a node within EHDS

Drug utilisation study of prescription **opioids**.  
[EUPAS105641]

PRAC  
OTS

**Effectiveness of COVID-19** vaccines against severe COVID-19 and post-acute outcomes of SARS-CoV-2 infection.

ECDC/VMP  
Complex

Drug utilisation study on co-prescribing of **endothelin receptor antagonists (ERAs)** and **phosphodiesterate-5 inhibitors (PDE-5is)** in pulmonary arterial hypertension.  
[EUPAS106052]

CHMP  
OTS

**DUS of medicines** at risk of **shortages**

EMA TRS  
OTS

**Multiple myeloma:** patient characterisation, treatments and survival in the period 2012-2022  
[EUPAS105033]

HTA/Payers  
OTS

Background all-cause **mortality rates in patients with severe asthma aged ≥12 years old**  
[EUPAS103936]

CHMP  
Complex

**EHDS** coagulopathy of COVID-19

EC/EHDS  
Complex

Drug utilisation study of **medicines with prokinetic properties** in children and adults diagnosed with gastroparesis

NCA  
OTS

OTS = off-the-shelf study

# Use case factsheet



## Stakeholders

### Use case leader



EUROPEAN MEDICINES AGENCY  
SCIENCE MEDICINES HEALTH

### Research teams

- DARWIN EU
- Denmark Health Data Authority, DK
- Health Data Hub, FR
- Croatian Institute for Public Health, HR
- Finnish Institute for Health and Welfare (THL), FI

### Nodes

 Findata, FI  HDH, FR

 DHDA DK  CIPH, HR

 DARWIN EU network

## Objectives



The use case will aim to address 5 research questions of growing complexity - **estimate the incidence of venous and arterial thromboembolic events** among:

1. the general population;
2. patients with COVID-19;
3. patients with SARS-CoV-2 vaccination ;
4. estimate the impact of clinical risk factors and prior SARS-CoV-2 vaccination on the incidence of venous and arterial thromboembolic events among patients with COVID-19 and worsening of COVID-19
5. the incidence rate ratios for such events among patients with COVID-19 during the period when Omicron was the dominant variant and people vaccinated against SARS-CoV-2, compared to background rates as estimated in objectives. 1, 2 and 3.



## Data

Coagulopathy related events

Use of thrombotic agents

Risk factors

Vaccination

Covid-19 worsening

## Research approach



- Each of the nodes participating in the project will be expected to select the research questions outlined above.
- Based on the questions and variables defined the protocol, data analysis will be conducted on both native data and OMOP data.
- Data analysis will focus on the following aspects:
  - Descriptive statistics of the observed characteristics of each population study;
  - Incidence of study outcome (venous thromboembolic events, arterial thromboembolic events, cardiovascular events)
  - Assessment of the impact of identified risk factors
  - Assessment of the risk of Covid-19 worsening
  - Contextualisation of incidence rate of thromboembolic events.

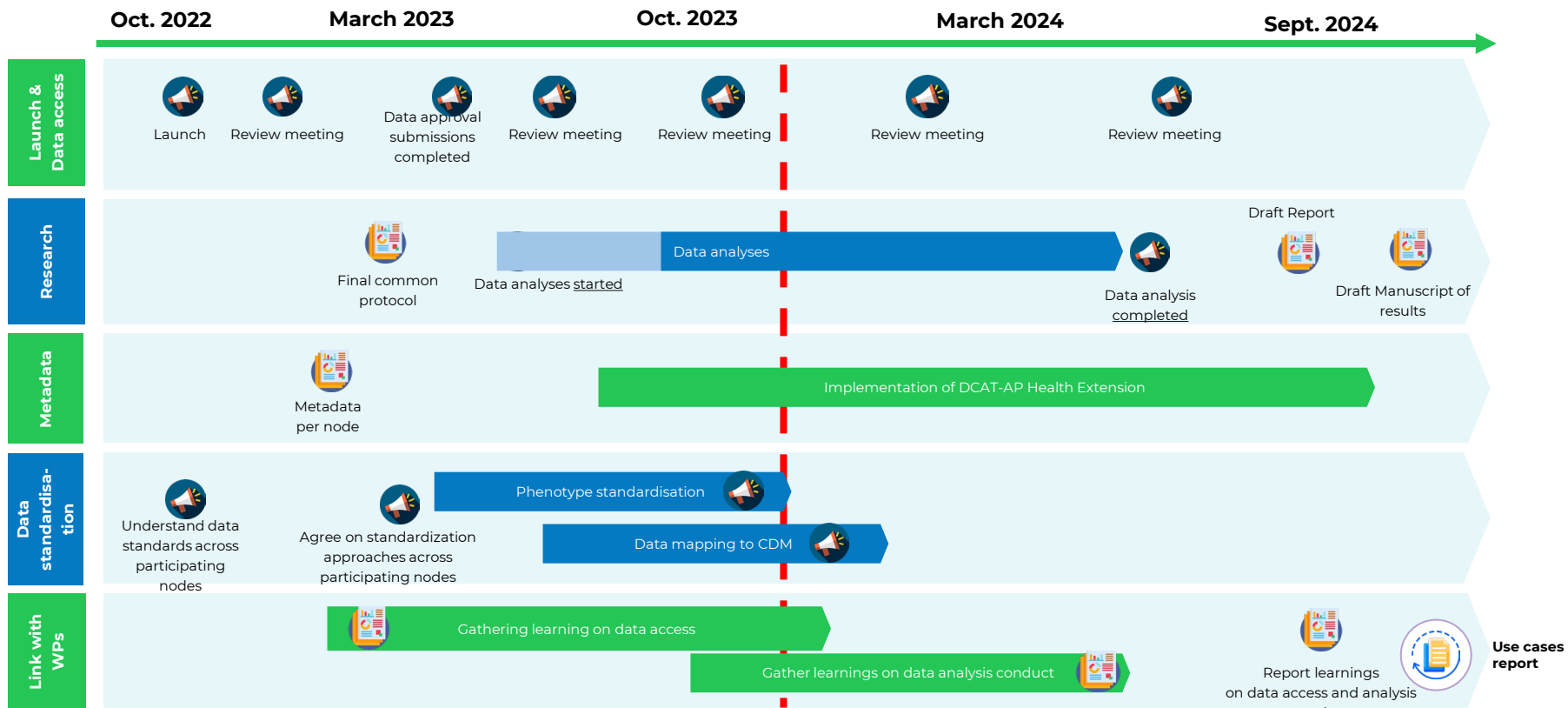


## Outputs

Aggregated results from each node that can then be pooled together or do comparative analysis between nodes.



# Use case timeline



# Key learnings so far

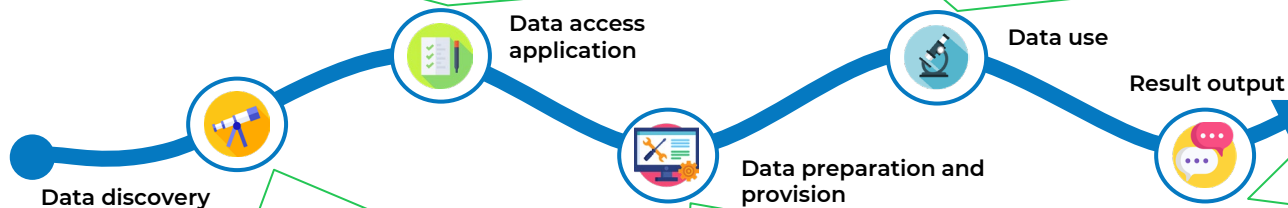


## Summary of main learnings & outputs

- **Variable requirements and timelines for access to data** across nodes/countries (data availability, data minimisation and GDPR interpretation)
- **Variety of clinical coding systems and interpretation**, requiring more time for creating (standardized) phenotypes in native data
- Use of a **common data model has accelerated the process** (so far)
- Opportunities and challenges of **testing while building**

Different routes, forms, standards, sample size and speed to access data

Heterogeneous interpretation of phenotypes across data sources



Leveraging existing processes & tools within DARWIN EU for selecting the right databases for a research question through feasibility assessments and metadata. Inspiration for some nodes to equip themselves with data catalogues

Time gained in having the entire database already mapped to a CDM vs. mapping data on a study-by-study basis.

N/A

# EHDS & HealthData@EU

Opportunity to enable a **R**apid, **W**ide and **D**eep access to healthcare data ?

## Opportunities...

- **Increased EU representativeness** in studies (geographic coverage, care settings, size of studies...)
- **Rapid, Wide, Deep** access to healthcare data to support better and faster decision making

## ... enabled by key principles

- **Implementation & readiness** - potential tensions between common EU vs each MS interpretation and/or timelines
- **Transparency & trust** – adopted mechanisms need to remain compatible with the need for rapid, wide and deep secure access
- Data access - **smooth governance & interoperable infrastructures**
- **Data protection & data security** – balancing anonymisation and pseudonymisation with possible tensions related data linkage

# Closing

- ❖ EHDS has the potential to **strengthen** and **accelerate the use of RWD/RWE** and **broaden impact**
- ❖ Ability to leverage a **large population sample** to conduct the study in (estimated 40+ million patients)
- ❖ **DARWIN EU** model means results expected first before end of the year
- ❖ Various learnings on the benefits of using a **common data model** (OMOP in this case)
- ❖ Opportunity to **test the legal proposal** with EMA as data processor within EHDS, with HDH as HDAB
- ❖ Transparent and trustful **collaboration**

# THANK YOU !

## Any questions?

### Further information

---

[Denise.Umuhire@ema.europa.eu](mailto:Denise.Umuhire@ema.europa.eu)

**Official address** Domenico Scarlattilaan 6 • 1083 HS Amsterdam • The Netherlands

**Telephone** +31 (0)88 781 6000

**Send us a question** Go to [www.ema.europa.eu/contact](http://www.ema.europa.eu/contact)

Follow us on  **@EMA\_News**



[Big Data](#)

[Clinical Trials and ACT EU](#)



[Big Data Highlights](#)

(subscribe [here](#))

[Clinical Trials Highlights](#)



[EMA events](#)

